



Lecture, to-night, in Victor Hall.  
School meeting next Tuesday evening.  
Easter comes early this year, - March 27th.  
Town Council meets on Wednesday evening next.  
Workmen's Loan Association meets on Monday evening.  
The Chamber of Commerce will have a banquet March 4th.  
Hammonon Basket Ball team will play the Pleasantville team to-day.  
"Visit-the-Schools Week" will occur the week of Feb. 14th to 18th.  
A meeting of the Grange will be held on Monday evening next, at 8 o'clock.  
The Girls' Basket Ball Club played Mt. Holly, Thursday, and beat them by a score of 16 to 7.  
The ban being lifted, children's dancing classes will be resumed on Saturday at 2 o'clock in Victor Hall.  
Poultry Raisers' Association will meet in Civic Club Hall, on Monday evening, February 7th, instead of Tuesday.  
There will be a joint meeting of both fire companies at the house of No. 1, next Monday evening, at 8.15 o'clock.  
A euchre and a dance will be given Monday evening, Feb. 7th, for the benefit of St. Joseph's Church. Tickets, 35 cts.  
Wm. Bunting, one of the few remaining Civil War veterans, and esteemed by all who knew him, died last Friday, following a stroke of paralysis.  
Rev. E. A. Rook, the new pastor of the Baptist Church, arrived in Hammonton with his family, on Thursday, and took possession of the parsonage.  
Mrs. F. C. Burt has received a great honor from the Grand Worthy Matron of the Eastern Star of New Jersey. She has been made Grand Deputy of the 10th District.

Owing to the fact that several social functions are being held on Monday evening, Mr. Purchase announces that he will be compelled to postpone his euchre and dance to Wednesday evening.  
Harvey Parker, who, with his family, was burned out last Tuesday, died on Saturday morning. He realized and appreciated the good-heartedness of Hammonton people before he passed away.

**Farmers' Institute.**

Those interested in the various lines of farming will be pleased to learn that the State and County Agricultural Boards have arranged an Institute for Hammonton on Wednesday next, afternoon and evening. All are cordially invited to attend the sessions in Grango Hall.  
The program is as follows:  
2.00 P. M. Possibilities of Alfalfa on our Lighter Soils - H. R. Cox, State College of Agriculture  
2.45 P. M. Gayden Tractors - Harry C. Brown, Camden  
3.30 P. M. Corn - H. R. Cox, State College of Agriculture  
7.30 P. M. The Peach Orchard - W. W. Oley, Seabrook Farms, Bridgeton  
8.15 P. M. Strawberries - Speaker to be announced.

**Republican Women Elect.**

The ladies held an interesting meeting, Wednesday afternoon, and elected officers and committees for the ensuing year. The officers are:  
President, Mrs. H. O. Packard.  
Vice-Pres., Mrs. Geo. McIntyre.  
Secretary, Mrs. W. W. Mayberry.  
Treasurer, Mrs. S. A. Goforth.

**A RECOMMENDATION.**

When we consider the number of hold-up and other crimes that are being committed in Hammonton, and vicinity, and the inability of the Police Department to cope with the conditions, we hear rumors of an organization, similar to the old "Klu Klux Klan" of the "Reconstruction" period, after the Civil War. The ideas and purpose of this move would be for the betterment of Hammonton and vicinity. Comments will be welcome. Address came to the editor: S. J. R.

**NOTICE**

The poisoning of dogs has been reported to me. The persons caught doing same will be hauled according to the law.  
Waltea J. Vernier,  
Officer of S. P. C. A.

**Atlantic County Poultry School.**

The Hammonton Poultry Raisers' Association closed its first school session on Monday evening, in the Civic Club Hall, and though it was a stormy night, the hall was filled with an enthusiastic audience. The subject was "A real round table and question box." Professors Harry R. Lewis, Elmer H. Wene, and Dr. Willard C. Thompson were present, and they had a full question box, which required their close attention until 10.30. The explicit manner in which they answered the great variety of questions was very gratifying, and the listeners received much reliable and valuable information upon matters that are puzzling the poultrymen continuously. The moving pictures consisted of four reels, showing the United States Government Poultry Farm, and they showed every detail connected with selection of breeders, incubation, brooding and rearing of chicks, housing, feeding and culling of stock, methods of cleaning, spraying and fumigation of houses, and many other things connected with poultry raising. After the meeting closed, refreshments were served, followed by music, dancing, and singing. A most enjoyable evening was spent by everyone present. The officers and members are greatly pleased and encouraged by the success that has attended this effort on the part of Raisers' Association, to ease the difficulties, explain the problems, and lighten the labors of those who are engaged in this important industry in this vicinity.

**AMONG THE CHURCHES.**

**Hammonton Baptist Church.**  
10.30 a.m., Morning Worship. Preaching by Rev. E. A. Rook, Pastor, at both services.  
11.45, Communion Service.  
12 m., Sunday School.  
6.45 p.m., Christian Endeavor.  
7.45 p.m., Preaching by Rev. Mr. Rook.  
Thursday, 7.45 p.m., Prayer and Praise Service.

**First M. R. Church.**  
Rev. Pennington Corson, Pastor.  
10.30 a.m., Morning Worship.  
Lord's Supper.  
12 m., Sunday School session.  
7.30 p.m., Evening Worship.  
Subject, "The Fine Art of Living."  
Thursday even'g, Prayer Service

**Christian Science Society.**  
Services, Sunday, 11 a.m. and Wednesday, 8 p.m., in Civic Club Hall.

**First Presbyterian Church.**  
Rev. Charles O. Mudge, Pastor.  
10.30 a.m., Morning Worship.  
Subject, "Renewing Your Strength."  
11.45, Men's Bible Class.  
12 m., Sunday School, Adult and High School Bible Class.  
7 p.m., Y. P. S. C. R.  
7 p.m., C. R. omitted.  
7.45, Observance of Young People's Day and forty years of Christian Endeavor. Special program and special music.  
Thursday, 3.45, Jr. C. R.  
Thursday, 7.45, Church Prayer Service.

**St. Mark's Church.**  
Rev. G. R. Underhill, Rector.  
Holy Eucharist and Sermon, 10.30.  
Sunday School and Bible Class, noon.  
Evensong, 4.00.  
Next Wednesday being Ash Wednesday, the services will be: Holy Communion, 7.00.  
Matins and Litany, 9.30.  
Evensong and Address, 8.00.

**The Mayor's Reply.**

Following in the reply to the citizen's question of two weeks ago, in regard to charges made against certain town officials:

## News From Bank Bros. Store

**OUR ENTIRE STOCK OF Suits and Overcoats for Men, Young Men and Boys, Coats for Women and Misses**

**AT HALF PRICE**

The most remarkable sale we ever held.

**Beginning Saturday, February 5th and ending Saturday, February 12th, at 10 P. M.**

**WE PLACE ON SALE**

# AT HALF PRICE

Our entire Stock of Men's and Young Men's Suits, Overcoats, Mackinaws, Boy's Suits, Women's and Misses' Winter Coats.

We are determined to sell every garment we have on hand and this is the final and last reduction that will accomplish it. Every garment has the original price ticket on, come and select what you want and pay just half the price the original ticket calls for.

Every garment is from our own stock, not adollars worth of merchandise was bought for this sale, so that you can rest assured the merchandise is reliable. It is an opportunity that nobody can afford to miss.

The following rules will be applied to goods sold at half price: No goods will be sent on approval. Nothing exchanged, no alterations, no charges. Every sale must be final.

**Suits for Men and Young Men at Half Price**

Were \$15.00 reduced to	\$ 7.50
" \$20.00 " "	\$10.00
" \$23.50 " "	\$11.75
" \$25.00 " "	\$12.50
" \$27.50 " "	\$13.75
" \$30.00 " "	\$15.00
" \$35.00 " "	\$17.50
" \$37.50 " "	\$18.75
" \$40.00 " "	\$20.00
" \$42.50 " "	\$21.25
" \$45.00 " "	\$22.50
" \$47.50 " "	\$23.75
" \$50.00 " "	\$25.00
" \$55.00 " "	\$27.50
" \$67.50 " "	\$33.75
" \$69.50 " "	\$34.75

**Women's and Misses' Coats at Half Price**

Were \$15.00 reduced to	\$ 7.50
" \$18.00 " "	\$ 9.00
" \$20.00 " "	\$10.00
" \$22.50 " "	\$11.25
" \$25.00 " "	\$12.50
" \$27.50 " "	\$13.75
" \$35.00 " "	\$17.50
" \$45.00 " "	\$22.50
" \$50.00 " "	\$25.00
" \$42.50 " "	\$21.25
" \$47.50 " "	\$23.75
" \$50.00 " "	\$25.00

**Overcoats at Half Price**

Were \$15.00 reduced to	\$ 7.50
" \$35.00 " "	\$17.50
" \$40.00 " "	\$20.00
" \$50.00 " "	\$25.00
" \$55.00 " "	\$27.50

**Mackinaws at Half Price**

Were \$10.00 reduced to	\$6.00
" \$15.00 " "	\$7.50
" \$16.50 " "	\$8.25

**Boys' Suits at Half Price**

Were \$ 7.50 reduced to	\$ 3.75
" \$ 8.00 " "	\$ 4.00
" \$ 9.00 " "	\$ 4.50
" \$10.00 " "	\$ 5.00
" \$12.50 " "	\$ 6.25
" \$15.00 " "	\$ 7.50
" \$18.00 " "	\$ 9.00
" \$20.00 " "	\$10.00
" \$22.50 " "	\$11.25

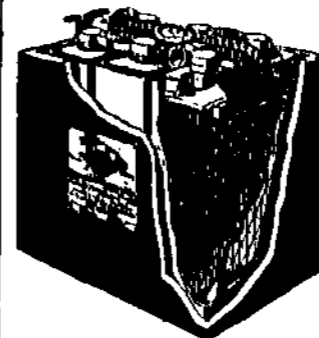
**50 Pair of Women's Shoes at 1-3 off. 30 Pair of Men's Shoes at 1-3 off.**  
Sale begins Saturday, February 5th and ends Saturday, February 12th at 10 p. m.

**ANNOUNCEMENT!**

I wish to announce that I am opening an Electrical Contracting business in Hammonton for installation, maintenance and repairs of power, lighting and other electric systems and appliances.  
Expert motor and generator service.  
Automobile starting, lighting and ignition systems, etc.  
Avail yourself of expert talent for the correction of your electrical and mechanical difficulties.  
My services are available at once, any time and any place.  
No job too big - no job too small.  
I also handle a complete line of dynamo electric machinery and household electrical appliances, including The Wonderful Prima Electric Washing Machine and The Simplex Ironing Machine.

**EDWARD J. FESER,**  
Electrical Mechanic

203 Egg Harbor Road. Hammonton



**Announcement to Automobilists!**  
We are Agents for the **Lion Storage Battery** in Hammonton.

**Ruberton's Auto Station**

Third and Bellevue, Hammonton, N. J.

# FASHION NOTES

Interesting Items for the Fair Sex

After the holiday rush has settled into history, women suddenly become obsessed with the wintery summary things designed for the winter.

Only a privileged few may feel the thrill of packing trunks bound for Southern climes, but our curiosity as to what the new season offers proves too strong an allure to resist. So we blithely sail into those department stores featuring garments and accessories that will come around to us when the first big bird makes his appearance. And of these none is more interesting than the latest blouse mod.

**Fashion Straps.** Point to a Strong Season for Separate Blouses. The advance departure of blouse models for Southern wear offers many ideas as to design and trimmings, but the general line remains much the same.

There is a tendency for all models to blouse slightly over the waistline, that ranges from the normal blousing to the biphine, where a draped girdle serves as a finish. There is about that "pinched-in" effect which is observed on some of the advance dress models, that is, the blouse is tucked into the skirt for a straight line under the arms to the hips and is welcome to the thin woman who frankly dreads the thought of the fitted effects of other years.

Separate skirts and tailored coats assume the continued vogue of the blouse which meets such a diversity of needs today, as it has articulated into the ranks of semi-formal afternoon and evening wear. The models designed of dyed wool, Georgette and pique velvet for winter with satin and tulle skirts, usually in black or brown worn with a washed girdle drape, are among the most exclusive styles of the season.

French grey, especially in lace and net, has a great following among well-dressed women. Such models are very effective when accompanied by black skirts, usually softly draped. And this color combination is being used strongly for spring in all manner of new things.

**All-Over Patterns in Soft-Tone Beadings** for New Georgette Models. For elegance there are chiffon and Georgette models overlaid with ornate and intricate all-over patterns in beads and silver and gold threads, many having an Oriental or Egyptian, Persian and Chinese pattern, besides those of a classic Greek character are featured. Many of those designs are unrolled by color. Cut and made in a new tone and in decent colors, besides glass beads, are for all-over patterns, forming a grid and intersecting effects. White is much used in lace and tulle. In such blouse models are those with kimono of long straightly fitting sleeves and semi-capelets. Where a skirt is of pique velvet or satin something like this serves as the skirt with the deeply draped. Again an elaborate box with filmy edging or narrow tulle, having prominent ends are featured.

From cloth of gold and silver are worn with pique velvet skirts, more especially in black, brown or gray, finished with tulle drapings. Where the blouse is of a more velvet, embroidery in metallic thread and silk provides a dramatic contrast. Frequently chiffon or Georgette models, delicately trimmed with tulle, are hand-made if worn with satin skirts, which may follow a simple model. Others parake a frame of the novel details, an draped tulle over the top of the double full that finishes the top of the blouse.

**Ancient People of Peru** Many strange things are to be seen among them, their customs, their dress, their weapons that were built in ancient times, and a reproduction of the burial ground, which is situated at Ancon, twenty-three miles from Lima.

Nothing definite has ever been learned concerning the strange people who lived in the highlands of Peru, but it is certain that they inhabited the country during the Inca period. The graves, however, furnish proof that they were an Inca people, fond of hunting and Indians in a collection.

The method of burial was primitive. The dead was placed in a coffin, and the body was wrapped in a shroud of wool. The shroud was made of a mixture of wool and cotton, and was dyed in various colors. The shroud was then placed in a coffin, and the coffin was buried in a hole in the ground.

**Teaching Willie Things** Little Willie, who at three acquires an absorbing interest for the world, and an insatiable curiosity, is now in the fourth year of his life. He is a bright, cheerful, and well-behaved child, and his parents are proud of his progress.

**Electrical Panacea** "The three cases on hand," said the doctor, "are all cases of electrical panacea. The first case is a case of electrical panacea, the second case is a case of electrical panacea, and the third case is a case of electrical panacea."

# Humps to Save Autos at Grade Crossings

The Nashville, Chattanooga and St. Louis Railway Company is giving serious consideration to means of preventing collisions between automobiles and trains at grade crossings. On this road, which operates 1,200 miles of line, there are 1,200 crossings and 22 other vehicles killing nine persons and injuring 53 last year during the year ending May 15, 1920, while from March 1, 1919, to September 1 of that year, 29 automobiles and 9 other vehicles were struck in this manner. In an effort to prevent accidents of this character, the general counsel of that road prepared a law which is proposed to have introduced into the coming session of the Tennessee Legislature.

The law which is proposed to have introduced into the coming session of the Tennessee Legislature, provides for the installation of hump or other speed restriction devices, under the direction of the State Highway Commission, on all grade crossings which are within the State and are not adequately protected.

Investigation shows that grade crossings accidents occur under two conditions. In many instances, the driver of the car is aware of the presence of the train on the track and deliberately tries to beat it. In other cases the driver of the car is paying no attention to the signals and slows up at the track not to look and listen. A law in Tennessee, passed at the last session of the Legislature, requires every driver of an automobile or other vehicle shall stop before crossing a railroad track.

An official of this road in a report made to the Legislature, said: "When a train is approaching a grade crossing, the driver of the car is aware of the presence of the train on the track and deliberately tries to beat it. In other cases the driver of the car is paying no attention to the signals and slows up at the track not to look and listen. A law in Tennessee, passed at the last session of the Legislature, requires every driver of an automobile or other vehicle shall stop before crossing a railroad track."

I have described this model in detail because it shows the elaborate use of hand and machine tucking that is being done in the making of all manner of new blouse models, whether of a dressy or tailored type. Direct from Paris is a clever model of Georgette crepe with round neck, short sleeves and widely draped girdle, trimmed with crepe of silk ribbon. This ribbon appears on all sorts of things and is both contrasting and self-matching. This ribbon is shown in a variety of colors and is being used for trimming Georgette dresses in military and new models in newwork. The broad ribbon on this model is taken in many places and is being used for trimming the girdle in several directions with the two tassels ends dropping down in front.

Equally new is another model of Georgette crepe with a low cut-off collar. The deep collar, cuffs and border are self-matching net heavily loaded with bugles. The strings are cut at the sides and are being used for trimming the girdle in several directions with the two tassels ends dropping down in front.

Equally new is another model of Georgette crepe with a low cut-off collar. The deep collar, cuffs and border are self-matching net heavily loaded with bugles. The strings are cut at the sides and are being used for trimming the girdle in several directions with the two tassels ends dropping down in front.

If you are young enough to wear a hat, you will find a low cut-off collar. The deep collar, cuffs and border are self-matching net heavily loaded with bugles. The strings are cut at the sides and are being used for trimming the girdle in several directions with the two tassels ends dropping down in front.

Equally new is another model of Georgette crepe with a low cut-off collar. The deep collar, cuffs and border are self-matching net heavily loaded with bugles. The strings are cut at the sides and are being used for trimming the girdle in several directions with the two tassels ends dropping down in front.

Equally new is another model of Georgette crepe with a low cut-off collar. The deep collar, cuffs and border are self-matching net heavily loaded with bugles. The strings are cut at the sides and are being used for trimming the girdle in several directions with the two tassels ends dropping down in front.

Equally new is another model of Georgette crepe with a low cut-off collar. The deep collar, cuffs and border are self-matching net heavily loaded with bugles. The strings are cut at the sides and are being used for trimming the girdle in several directions with the two tassels ends dropping down in front.

Equally new is another model of Georgette crepe with a low cut-off collar. The deep collar, cuffs and border are self-matching net heavily loaded with bugles. The strings are cut at the sides and are being used for trimming the girdle in several directions with the two tassels ends dropping down in front.

# The Development of the Wireless System

America's position in communicating with the outside world has been most unsatisfactory for years. It is a fact that the wireless system is now being developed in a most rapid manner. The wireless system is now being developed in a most rapid manner. The wireless system is now being developed in a most rapid manner.

America's position in communicating with the outside world has been most unsatisfactory for years. It is a fact that the wireless system is now being developed in a most rapid manner. The wireless system is now being developed in a most rapid manner. The wireless system is now being developed in a most rapid manner.

America's position in communicating with the outside world has been most unsatisfactory for years. It is a fact that the wireless system is now being developed in a most rapid manner. The wireless system is now being developed in a most rapid manner. The wireless system is now being developed in a most rapid manner.

America's position in communicating with the outside world has been most unsatisfactory for years. It is a fact that the wireless system is now being developed in a most rapid manner. The wireless system is now being developed in a most rapid manner. The wireless system is now being developed in a most rapid manner.

America's position in communicating with the outside world has been most unsatisfactory for years. It is a fact that the wireless system is now being developed in a most rapid manner. The wireless system is now being developed in a most rapid manner. The wireless system is now being developed in a most rapid manner.

America's position in communicating with the outside world has been most unsatisfactory for years. It is a fact that the wireless system is now being developed in a most rapid manner. The wireless system is now being developed in a most rapid manner. The wireless system is now being developed in a most rapid manner.

America's position in communicating with the outside world has been most unsatisfactory for years. It is a fact that the wireless system is now being developed in a most rapid manner. The wireless system is now being developed in a most rapid manner. The wireless system is now being developed in a most rapid manner.

America's position in communicating with the outside world has been most unsatisfactory for years. It is a fact that the wireless system is now being developed in a most rapid manner. The wireless system is now being developed in a most rapid manner. The wireless system is now being developed in a most rapid manner.

America's position in communicating with the outside world has been most unsatisfactory for years. It is a fact that the wireless system is now being developed in a most rapid manner. The wireless system is now being developed in a most rapid manner. The wireless system is now being developed in a most rapid manner.

America's position in communicating with the outside world has been most unsatisfactory for years. It is a fact that the wireless system is now being developed in a most rapid manner. The wireless system is now being developed in a most rapid manner. The wireless system is now being developed in a most rapid manner.

America's position in communicating with the outside world has been most unsatisfactory for years. It is a fact that the wireless system is now being developed in a most rapid manner. The wireless system is now being developed in a most rapid manner. The wireless system is now being developed in a most rapid manner.

America's position in communicating with the outside world has been most unsatisfactory for years. It is a fact that the wireless system is now being developed in a most rapid manner. The wireless system is now being developed in a most rapid manner. The wireless system is now being developed in a most rapid manner.

# Very Old Timber

Reports seem to be divided as to which is the two hundred year-old timber of Western Australia is the more durable. The timber of Western Australia is the more durable. The timber of Western Australia is the more durable.

Reports seem to be divided as to which is the two hundred year-old timber of Western Australia is the more durable. The timber of Western Australia is the more durable. The timber of Western Australia is the more durable.

Reports seem to be divided as to which is the two hundred year-old timber of Western Australia is the more durable. The timber of Western Australia is the more durable. The timber of Western Australia is the more durable.

Reports seem to be divided as to which is the two hundred year-old timber of Western Australia is the more durable. The timber of Western Australia is the more durable. The timber of Western Australia is the more durable.

Reports seem to be divided as to which is the two hundred year-old timber of Western Australia is the more durable. The timber of Western Australia is the more durable. The timber of Western Australia is the more durable.

Reports seem to be divided as to which is the two hundred year-old timber of Western Australia is the more durable. The timber of Western Australia is the more durable. The timber of Western Australia is the more durable.

Reports seem to be divided as to which is the two hundred year-old timber of Western Australia is the more durable. The timber of Western Australia is the more durable. The timber of Western Australia is the more durable.

Reports seem to be divided as to which is the two hundred year-old timber of Western Australia is the more durable. The timber of Western Australia is the more durable. The timber of Western Australia is the more durable.

Reports seem to be divided as to which is the two hundred year-old timber of Western Australia is the more durable. The timber of Western Australia is the more durable. The timber of Western Australia is the more durable.

Reports seem to be divided as to which is the two hundred year-old timber of Western Australia is the more durable. The timber of Western Australia is the more durable. The timber of Western Australia is the more durable.

Reports seem to be divided as to which is the two hundred year-old timber of Western Australia is the more durable. The timber of Western Australia is the more durable. The timber of Western Australia is the more durable.

Reports seem to be divided as to which is the two hundred year-old timber of Western Australia is the more durable. The timber of Western Australia is the more durable. The timber of Western Australia is the more durable.

# Earthquakes

In the vast range of natural phenomena the earthquake is preeminently the most appalling. The destructive work of the volcano is confined to a comparatively small area; the tornado or hurricane devastates a narrow strip of territory; the bolt from a thundercloud extends its energies upon a single point; but the earthquake can carry devastation into thousands of square miles of the earth's surface.

In the vast range of natural phenomena the earthquake is preeminently the most appalling. The destructive work of the volcano is confined to a comparatively small area; the tornado or hurricane devastates a narrow strip of territory; the bolt from a thundercloud extends its energies upon a single point; but the earthquake can carry devastation into thousands of square miles of the earth's surface.

In the vast range of natural phenomena the earthquake is preeminently the most appalling. The destructive work of the volcano is confined to a comparatively small area; the tornado or hurricane devastates a narrow strip of territory; the bolt from a thundercloud extends its energies upon a single point; but the earthquake can carry devastation into thousands of square miles of the earth's surface.

In the vast range of natural phenomena the earthquake is preeminently the most appalling. The destructive work of the volcano is confined to a comparatively small area; the tornado or hurricane devastates a narrow strip of territory; the bolt from a thundercloud extends its energies upon a single point; but the earthquake can carry devastation into thousands of square miles of the earth's surface.

In the vast range of natural phenomena the earthquake is preeminently the most appalling. The destructive work of the volcano is confined to a comparatively small area; the tornado or hurricane devastates a narrow strip of territory; the bolt from a thundercloud extends its energies upon a single point; but the earthquake can carry devastation into thousands of square miles of the earth's surface.

In the vast range of natural phenomena the earthquake is preeminently the most appalling. The destructive work of the volcano is confined to a comparatively small area; the tornado or hurricane devastates a narrow strip of territory; the bolt from a thundercloud extends its energies upon a single point; but the earthquake can carry devastation into thousands of square miles of the earth's surface.

In the vast range of natural phenomena the earthquake is preeminently the most appalling. The destructive work of the volcano is confined to a comparatively small area; the tornado or hurricane devastates a narrow strip of territory; the bolt from a thundercloud extends its energies upon a single point; but the earthquake can carry devastation into thousands of square miles of the earth's surface.

In the vast range of natural phenomena the earthquake is preeminently the most appalling. The destructive work of the volcano is confined to a comparatively small area; the tornado or hurricane devastates a narrow strip of territory; the bolt from a thundercloud extends its energies upon a single point; but the earthquake can carry devastation into thousands of square miles of the earth's surface.

In the vast range of natural phenomena the earthquake is preeminently the most appalling. The destructive work of the volcano is confined to a comparatively small area; the tornado or hurricane devastates a narrow strip of territory; the bolt from a thundercloud extends its energies upon a single point; but the earthquake can carry devastation into thousands of square miles of the earth's surface.

In the vast range of natural phenomena the earthquake is preeminently the most appalling. The destructive work of the volcano is confined to a comparatively small area; the tornado or hurricane devastates a narrow strip of territory; the bolt from a thundercloud extends its energies upon a single point; but the earthquake can carry devastation into thousands of square miles of the earth's surface.

In the vast range of natural phenomena the earthquake is preeminently the most appalling. The destructive work of the volcano is confined to a comparatively small area; the tornado or hurricane devastates a narrow strip of territory; the bolt from a thundercloud extends its energies upon a single point; but the earthquake can carry devastation into thousands of square miles of the earth's surface.

In the vast range of natural phenomena the earthquake is preeminently the most appalling. The destructive work of the volcano is confined to a comparatively small area; the tornado or hurricane devastates a narrow strip of territory; the bolt from a thundercloud extends its energies upon a single point; but the earthquake can carry devastation into thousands of square miles of the earth's surface.

# The Northern Home of the Seal

The principal seal fisheries are those of Newfoundland and Labrador, the Gulf of St. Lawrence, the White Sea and Arctic Ocean, the Canadian North and South Pacific.

The principal seal fisheries are those of Newfoundland and Labrador, the Gulf of St. Lawrence, the White Sea and Arctic Ocean, the Canadian North and South Pacific.

The principal seal fisheries are those of Newfoundland and Labrador, the Gulf of St. Lawrence, the White Sea and Arctic Ocean, the Canadian North and South Pacific.

The principal seal fisheries are those of Newfoundland and Labrador, the Gulf of St. Lawrence, the White Sea and Arctic Ocean, the Canadian North and South Pacific.

The principal seal fisheries are those of Newfoundland and Labrador, the Gulf of St. Lawrence, the White Sea and Arctic Ocean, the Canadian North and South Pacific.

The principal seal fisheries are those of Newfoundland and Labrador, the Gulf of St. Lawrence, the White Sea and Arctic Ocean, the Canadian North and South Pacific.

The principal seal fisheries are those of Newfoundland and Labrador, the Gulf of St. Lawrence, the White Sea and Arctic Ocean, the Canadian North and South Pacific.

The principal seal fisheries are those of Newfoundland and Labrador, the Gulf of St. Lawrence, the White Sea and Arctic Ocean, the Canadian North and South Pacific.

The principal seal fisheries are those of Newfoundland and Labrador, the Gulf of St. Lawrence, the White Sea and Arctic Ocean, the Canadian North and South Pacific.

The principal seal fisheries are those of Newfoundland and Labrador, the Gulf of St. Lawrence, the White Sea and Arctic Ocean, the Canadian North and South Pacific.

The principal seal fisheries are those of Newfoundland and Labrador, the Gulf of St. Lawrence, the White Sea and Arctic Ocean, the Canadian North and South Pacific.

The principal seal fisheries are those of Newfoundland and Labrador, the Gulf of St. Lawrence, the White Sea and Arctic Ocean, the Canadian North and South Pacific.

# New Lamp Illuminates Front of Car

A new idea in automobile lamps is a dirigible pendant with the light normally shining downward. It is located in front of the radiator, exactly in the center, and near the top of the windshield wiper mechanism. The light of illumination can be projected or retracted, or it may be thrown on either side of the road.

A new idea in automobile lamps is a dirigible pendant with the light normally shining downward. It is located in front of the radiator, exactly in the center, and near the top of the windshield wiper mechanism. The light of illumination can be projected or retracted, or it may be thrown on either side of the road.

A new idea in automobile lamps is a dirigible pendant with the light normally shining downward. It is located in front of the radiator, exactly in the center, and near the top of the windshield wiper mechanism. The light of illumination can be projected or retracted, or it may be thrown on either side of the road.

A new idea in automobile lamps is a dirigible pendant with the light normally shining downward. It is located in front of the radiator, exactly in the center, and near the top of the windshield wiper mechanism. The light of illumination can be projected or retracted, or it may be thrown on either side of the road.

A new idea in automobile lamps is a dirigible pendant with the light normally shining downward. It is located in front of the radiator, exactly in the center, and near the top of the windshield wiper mechanism. The light of illumination can be projected or retracted, or it may be thrown on either side of the road.

A new idea in automobile lamps is a dirigible pendant with the light normally shining downward. It is located in front of the radiator, exactly in the center, and near the top of the windshield wiper mechanism. The light of illumination can be projected or retracted, or it may be thrown on either side of the road.

A new idea in automobile lamps is a dirigible pendant with the light normally shining downward. It is located in front of the radiator, exactly in the center, and near the top of the windshield wiper mechanism. The light of illumination can be projected or retracted, or it may be thrown on either side of the road.

A new idea in automobile lamps is a dirigible pendant with the light normally shining downward. It is located in front of the radiator, exactly in the center, and near the top of the windshield wiper mechanism. The light of illumination can be projected or retracted, or it may be thrown on either side of the road.

A new idea in automobile lamps is a dirigible pendant with the light normally shining downward. It is located in front of the radiator, exactly in the center, and near the top of the windshield wiper mechanism. The light of illumination can be projected or retracted, or it may be thrown on either side of the road.

A new idea in automobile lamps is a dirigible pendant with the light normally shining downward. It is located in front of the radiator, exactly in the center, and near the top of the windshield wiper mechanism. The light of illumination can be projected or retracted, or it may be thrown on either side of the road.

A new idea in automobile lamps is a dirigible pendant with the light normally shining downward. It is located in front of the radiator, exactly in the center, and near the top of the windshield wiper mechanism. The light of illumination can be projected or retracted, or it may be thrown on either side of the road.

A new idea in automobile lamps is a dirigible pendant with the light normally shining downward. It is located in front of the radiator, exactly in the center, and near the top of the windshield wiper mechanism. The light of illumination can be projected or retracted, or it may be thrown on either side of the road.

# Animal Strength

Tests made to determine the respective pulling power of horses, men, and elephants showed that two horses weighing one thousand six hundred pounds each, together pulled three thousand seven hundred and fifty pounds more than their combined weight. One elephant weighing twelve thousand pounds, pulled eight thousand seven hundred and fifty pounds, or three thousand two hundred and fifty pounds less than his weight.

Tests made to determine the respective pulling power of horses, men, and elephants showed that two horses weighing one thousand six hundred pounds each, together pulled three thousand seven hundred and fifty pounds more than their combined weight. One elephant weighing twelve thousand pounds, pulled eight thousand seven hundred and fifty pounds, or three thousand two hundred and fifty pounds less than his weight.

Tests made to determine the respective pulling power of horses, men, and elephants showed that two horses weighing one thousand six hundred pounds each, together pulled three thousand seven hundred and fifty pounds more than their combined weight. One elephant weighing twelve thousand pounds, pulled eight thousand seven hundred and fifty pounds, or three thousand two hundred and fifty pounds less than his weight.

Tests made to determine the respective pulling power of horses, men, and elephants showed that two horses weighing one thousand six hundred pounds each, together pulled three thousand seven hundred and fifty pounds more than their combined weight. One elephant weighing twelve thousand pounds, pulled eight thousand seven hundred and fifty pounds, or three thousand two hundred and fifty pounds less than his weight.

Tests made to determine the respective pulling power of horses, men, and elephants showed that two horses weighing one thousand six hundred pounds each, together pulled three thousand seven hundred and fifty pounds more than their combined weight. One elephant weighing twelve thousand pounds, pulled eight thousand seven hundred and fifty pounds, or three thousand two hundred and fifty pounds less than his weight.

Tests made to determine the respective pulling power of horses, men, and elephants showed that two horses weighing one thousand six hundred pounds each, together pulled three thousand seven hundred and fifty pounds more than their combined weight. One elephant weighing twelve thousand pounds, pulled eight thousand seven hundred and fifty pounds, or three thousand two hundred and fifty pounds less than his weight.

Tests made to determine the respective pulling power of horses, men, and elephants showed that two horses weighing one thousand six hundred pounds each, together pulled three thousand seven hundred and fifty pounds more than their combined weight. One elephant weighing twelve thousand pounds, pulled eight thousand seven hundred and fifty pounds, or three thousand two hundred and fifty pounds less than his weight.

Tests made to determine the respective pulling power of horses, men, and elephants showed that two horses weighing one thousand six hundred pounds each, together pulled three thousand seven hundred and fifty pounds more than their combined weight. One elephant weighing twelve thousand pounds, pulled eight thousand seven hundred and fifty pounds, or three thousand two hundred and fifty pounds less than his weight.

Tests made to determine the respective pulling power of horses, men, and elephants showed that two horses weighing one thousand six hundred pounds each, together pulled three thousand seven hundred and fifty pounds more than their combined weight. One elephant weighing twelve thousand pounds, pulled eight thousand seven hundred and fifty pounds, or three thousand two hundred and fifty pounds less than his weight.

Tests made to determine the respective pulling power of horses, men, and elephants showed that two horses weighing one thousand six hundred pounds each, together pulled three thousand seven hundred and fifty pounds more than their combined weight. One elephant weighing twelve thousand pounds, pulled eight thousand seven hundred and fifty pounds, or three thousand two hundred and fifty pounds less than his weight.

Tests made to determine the respective pulling power of horses, men, and elephants showed that two horses weighing one thousand six hundred pounds each, together pulled three thousand seven hundred and fifty pounds more than their combined weight. One elephant weighing twelve thousand pounds, pulled eight thousand seven hundred and fifty pounds, or three thousand two hundred and fifty pounds less than his weight.

Tests made to determine the respective pulling power of horses, men, and elephants showed that two horses weighing one thousand six hundred pounds each, together pulled three thousand seven hundred and fifty pounds more than their combined weight. One elephant weighing twelve thousand pounds, pulled eight thousand seven hundred and fifty pounds, or three thousand two hundred and fifty pounds less than his weight.

# The Use of Opium

Opium is the dried juice of the white poppy, a flower that grows in many parts of Asia. A few days after the flowers have fallen off the plants men go through the fields in the afternoon and pull up the plants, leaving only the heads. Out of these heads are made opium, which is then sold in the market.

Opium is the dried juice of the white poppy, a flower that grows in many parts of Asia. A few days after the flowers have fallen off the plants men go through the fields in the afternoon and pull up the plants, leaving only the heads. Out of these heads are made opium, which is then sold in the market.

Opium is the dried juice of the white poppy, a flower that grows in many parts of Asia. A few days after the flowers have fallen off the plants men go through the fields in the afternoon and pull up the plants, leaving only the heads. Out of these heads are made opium, which is then sold in the market.

Opium is the dried juice of the white poppy, a flower that grows in many parts of Asia. A few days after the flowers have fallen off the plants men go through the fields in the afternoon and pull up the plants, leaving only the heads. Out of these heads are made opium, which is then sold in the market.

Opium is the dried juice of the white poppy, a flower that grows in many parts of Asia. A few days after the flowers have fallen off the plants men go through the fields in the afternoon and pull up the plants, leaving only the heads. Out of these heads are made opium, which is then sold in the market.

Opium is the dried juice of the white poppy, a flower that grows in many parts of Asia. A few days after the flowers have fallen off the plants men go through the fields in the afternoon and pull up the plants, leaving only the heads. Out of these heads are made opium, which is then sold in the market.

Opium is the dried juice of the white poppy, a flower that grows in many parts of Asia. A few days after the flowers have fallen off the plants men go through the fields in the afternoon and pull up the plants, leaving only the heads. Out of these heads are made opium, which is then sold in the market.

Opium is the dried juice of the white poppy, a flower that grows in many parts of Asia. A few days after the flowers have fallen off the plants men go through the fields in the afternoon and pull up the plants, leaving only the heads. Out of these heads are made opium, which is then sold in the market.

Opium is the dried juice of the white poppy, a flower that grows in many parts of Asia. A few days after the flowers have fallen off the plants men go through the fields in the afternoon and pull up the plants, leaving only the heads. Out of these heads are made opium, which is then sold in the market.

Opium is the dried juice of the white poppy, a flower that grows in many parts of Asia. A few days after the flowers have fallen off the plants men go through the fields in the afternoon and pull up the plants, leaving only the heads. Out of these heads are made opium, which is then sold in the market.

Opium is the dried juice of the white poppy, a flower that grows in many parts of Asia. A few days after the flowers have fallen off the plants men go through the fields in the afternoon and pull up the plants, leaving only the heads. Out of these heads are made opium, which is then sold in the market.

Opium is the dried juice of the white poppy, a flower that grows in many parts of Asia. A few days after the flowers have fallen off the plants men go through the fields in the afternoon and pull up the plants, leaving only the heads. Out of these heads are made opium, which is then sold in the market.

# Electric Treatment of Milk

Pasteurization of milk is absolutely necessary to make it safe for drinking. The electric treatment of milk is a new method of pasteurization that is being used in many parts of the world. It is a simple and effective method that is being used in many parts of the world.

Pasteurization of milk is absolutely necessary to make it safe for drinking. The electric treatment of milk is a new method of pasteurization that is being used in many parts of the world. It is a simple and effective method that is being used in many parts of the world.

Pasteurization of milk is absolutely necessary to make it safe for drinking. The electric treatment of milk is a new method of pasteurization that is being used in many parts of the world. It is a simple and effective method that is being used in many parts of the world.

Pasteurization of milk is absolutely necessary to make it safe for drinking. The electric treatment of milk is a new method of pasteurization that is being used in many parts of the world. It is a simple and effective method that is being used in many parts of the world.

Pasteurization of milk is absolutely necessary to make it safe for drinking. The electric treatment of milk is a new method of pasteurization that is being used in many parts of the world. It is a simple and effective method that is being used in many parts of the world.

Pasteurization of milk is absolutely necessary to make it safe for drinking. The electric treatment of milk is a new method of pasteurization that is being used in many parts of the world. It is a simple and effective method that is being used in many parts of the world.

Pasteurization of milk is absolutely necessary to make it safe for drinking. The electric treatment of milk is a new method of pasteurization that is being used in many parts of the world. It is a simple and effective method that is being used in many parts of the world.

Pasteurization of milk is absolutely necessary to make it safe for drinking. The electric treatment of milk is a new method of pasteurization that is being used in many parts of the world. It is a simple and effective method that is being used in many parts of the world.

Pasteurization of milk is absolutely necessary to make it safe for drinking. The electric treatment of milk is a new method of pasteurization that is being used in many parts of the world. It is a simple and effective method that is being used in many parts of the world.

Pasteurization of milk is absolutely necessary to make it safe for drinking. The electric treatment of milk is a new method of pasteurization that is being used in many parts of the world. It is a simple and effective method that is being used in many parts of the world.

Pasteurization of milk is absolutely necessary to make it safe for drinking. The electric treatment of milk is a new method of pasteurization that is being used in many parts of the world. It is a simple and effective method that is being used in many parts of the world.

Pasteurization of milk is absolutely necessary to make it safe for drinking. The electric treatment of milk is a new method of pasteurization that is being used in many parts of the world. It is a simple and effective method that is being used in many parts of the world.

# Scottish Superstitions

On an infant entering the first year of his life, the mother who carries it demands a piece of silver, an egg and some bread for good luck for the child. This is a folk lore in Edinburgh.

On an infant entering the first year of his life, the mother who carries it demands a piece of silver, an egg and some bread for good luck for the child. This is a folk lore in Edinburgh.

On an infant entering the first year of his life, the mother who carries it demands a piece of silver, an egg and some bread for good luck for the child. This is a folk lore in Edinburgh.

On an infant entering the first year of his life, the mother who carries it demands a piece of silver, an egg and some bread for good luck for the child. This is a folk lore in Edinburgh.

Watches Clocks

Agency for the  
**Never-Wind Clock**  
Guaranteed for 50 years. See it running  
in our window.

**D. S. Bellamy, The Jeweler**  
211 Bellevue Avenue

Jewelry Silversware

So many people have been putting  
off their buying of footwear on  
account of the high prices, we wish  
to announce  
that  
prices  
are  
all  
the  
way  
down

It will be to your interest to call  
in, if you need anything in the line  
of footwear, hosiery and Gent's  
furnishings.

## Monfort's Shoe Store



**CHARLES LOMBARDO & SON**  
Singer Sewing Machines and  
Talking Machines  
Easy monthly payments conveniently arranged  
for customers.  
Exchange all kinds of Sewing and Talking Machines.  
Up-to-date assortment of Records.  
Repairing of all kinds of Sewing and Talking  
Machines and Fire Arms. All work done by  
skilled mechanics.  
Call on us, or let us call on you.  
White Horse Pike, Waterford, N. J.

Best Photo  
Berlin 42-11



### SOUTH JERSEY REPUBLICAN

#### South Jersey Republican

Entered every Saturday morning  
Entered in Hamilton Post-Office as second-class matter by  
WILLIAM O. HONY, PUBLISHER  
Office, 208-210 Bellevue Avenue. Residence, Palmyra, at Second Street.  
Subscription Price: \$1.00 per year. In advance. Five cents per copy.  
On sale at office, and at Robert's News Store  
Advertising rates on application. Local Phone—422 and 625.

SATURDAY, FEBRUARY 5, 1921

Yes, the ground hog saw his shadow, Tuesday, for about ten minutes.

There is a demand for a printed school report, that the citizens may know how their money is being spent.

It may be fun for the boys, but rather dangerous—throwing snowballs at autos passing School Park. It is rather difficult to drive an auto and, at the same time, dodge fifty or more snowballs.

Attend the School Meeting next Tuesday evening, at 7.30, and see that the three retiring members are retained on the Board. Ladies are absolutely necessary on some of their committees; and the third incumbent is invaluable when it comes to financing school affairs. Read the article on another page relating to school matters.

People are betting on who will be the next postmaster. There are seven candidates, and all have been assured that they will receive the appointment,—so they say.

Well, the lid was lifted last Saturday, and children liberated to go where they please. It did seem good to see the kiddies again.

Talk about "road hog!" How often do you have to take to the street, or climb over the hedge, rather than bump through a gang walking elbow to elbow, monopolizing the sidewalks?

Had we been on the scene, on Broadway, last week, we would have observed several more of Hammonton's housewives, hard at work, making a clean, warm, comfortable home—for the unfortunate, burdened-out family. Among these were prominent members of the Civic Club. Among them was one of the best cooks in Hammonton, and the result of her efforts must have warmed both body and heart of the Parker family. Everyone who assisted in any way way deserves praise for their noble work.

Several hold-ups have occurred in this vicinity, recently. Although investigations are being made, thus far we have heard of no clues, tho' the authorities are on the job. We suggest that the town hire a few jitneys with hot teeth on the back seats.

### Another Drop in the Price of Meats

Best Cuts of Chuck	16c lb.
Bolar and Cross Cut Roast	24c lb.
Bottom Round	28c lb.
Plate and Brisket Beef	10c lb.
Fresh Hamburg Steak	22c lb.
Skin Back Hams (whole)	24c lb.
(sliced)	40c lb.
Large Picnic Hams	17c lb.
Half Smokes	24c lb.

### Ruberton's Markets

COR. BELLEVUE & EGG HARBOR ROAD  
208 BELLEVUE AVENUE

"Deal at the Store convenient to you."

## We Have Repriced

every piece of  
**Merchandise**

and every pair of  
**Shoes**

in our store.

Come in and let us quote you the New  
Lower Price.

### Waples' Department Store

214 and 216 Bellevue Ave.

HAMMONTON, N. J.

OWING to the uncertain condition of the market at present, I am unable to publish prices of junk. However, I shall be glad to call, and will quote you the highest prices that the market will allow.

Phone Bell 72-J or Drop Postal.

**JOE LERNER, 218 WASHINGTON STREET  
HAMMONTON, N. J.**

### WILLIAM DOERFEL

Hammonton's Modern Insurance Office  
All Kinds of Insurance  
CONVEYANCING NOTARY PUBLIC  
New building, rear of The Peoples Bank, Central Avenue.  
Hammonton, N. J. Keystone phone 1403

### Hammonton Marble and Granite Works

—Cemetery Works Our Specialty—  
Yard Opposite Pa. R. R. Station Hammonton, N. J.  
**ANDREW JANNETT**  
General Sales Agent  
Letters can be cut at Cemeteries. Stones Cleaned and Re-set.

**P. Ravelli, Falciani Co., 109 Orchard Street**

### Statement HAMMONTON TRUST COMPANY Close of Business December 31st, 1920

Resources	
Bonds and Investments	\$534,750.00
Loans	773,171.00
Cash on Hand and in Bank	50,959.41
Real Estate, Furniture and Fixtures	16,570.76
Other Assets	12,511.63
	\$913,944.51
Liabilities	
Capital Stock	\$500,000.00
Surplus Fund	35,000.00
Undivided Profits	9,267.50
Deposits	724,013.28
Due to Banks	623.67
Bills Payable	50,000.00
Guaranteed Mortgages	3,600.00
	\$913,944.51

Directors:  
Thomas Skinner, H. K. Spear,  
Henry Meanley, Daniel Ballard,  
J. C. Butler, Dean S. Renwick,  
Andrew Rutherford, Edw. W. Mc  
Govern, Wm. H. Parkhurst, P. T.  
Raines, P. Anthony Colasanto,  
Benjamin Foglietta.

Stop in.  
Hear the  
New  
Victor  
Records  
for  
February



- |      |                                      |      |      |
|------|--------------------------------------|------|------|
| 2821 | A Dream                              | Paul | Paul |
| 2822 | The Goodbye                          | Paul | Paul |
| 2823 | My Heart is in the Hands of the Lord | Paul | Paul |
| 2824 | My Heart is in the Hands of the Lord | Paul | Paul |
| 2825 | My Heart is in the Hands of the Lord | Paul | Paul |
| 2826 | My Heart is in the Hands of the Lord | Paul | Paul |
| 2827 | My Heart is in the Hands of the Lord | Paul | Paul |
| 2828 | My Heart is in the Hands of the Lord | Paul | Paul |
| 2829 | My Heart is in the Hands of the Lord | Paul | Paul |
| 2830 | My Heart is in the Hands of the Lord | Paul | Paul |
| 2831 | My Heart is in the Hands of the Lord | Paul | Paul |
| 2832 | My Heart is in the Hands of the Lord | Paul | Paul |
| 2833 | My Heart is in the Hands of the Lord | Paul | Paul |
| 2834 | My Heart is in the Hands of the Lord | Paul | Paul |
| 2835 | My Heart is in the Hands of the Lord | Paul | Paul |
| 2836 | My Heart is in the Hands of the Lord | Paul | Paul |
| 2837 | My Heart is in the Hands of the Lord | Paul | Paul |
| 2838 | My Heart is in the Hands of the Lord | Paul | Paul |
| 2839 | My Heart is in the Hands of the Lord | Paul | Paul |
| 2840 | My Heart is in the Hands of the Lord | Paul | Paul |

### WARE CAMPBELL CO.

204 Bellevue Avenue  
Hammonton, N. J.  
Phone

# 20% REDUCTION

To stimulate business during our usual off-season, we will make a  
**20% Reduction**  
in our wiring schedule, and a  
**10% reduction** on all fixture prices.

**DURING JANUARY & FEBRUARY**

Drop postal for estimate or call,

## Royal Electric Co.

HAMMONTON, N. J.

Phone, Local 942

Phone, Bell, 14

**Little babies are happy if their food is right. Since 1877 healthy babies have been raised on—**  
**Borden's EAGLE BRAND Condensed Milk**



You have a  
**Fire Insurance Policy**

THESE times are hard—but how about the bread-winner, the head of the household, the one who is earning the money to support the family? A fire insurance policy is not enough. Adversity strikes from an unexpected quarter. Complete protection is a good deal less than you might lose by the least of the misfortunes which could happen to you. Come in and learn how the

**INSURANCE SERVICE OF THE HARTFORD**

protects you against any form of financial loss due to accident or misfortune.

**N. V. CONOVER, Agent,  
WINSLOW, N. J.**

## Girls Wanted!

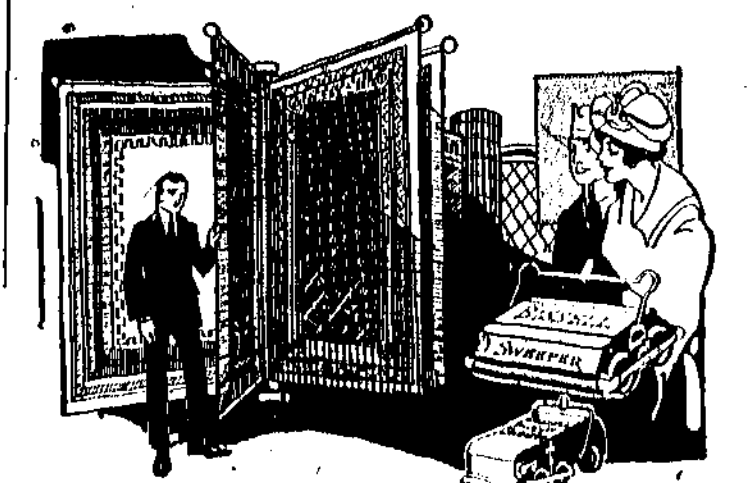
We need 15 girls at once who have had experience on sewing machines, those that have worked on shirts or dresses preferred, to work on Children's Dresses.

One girl wanted for button-hole machine, also button sewer.

Three pressers wanted. Apply to

**ELLIS AARON**  
Front Street, opp. Penna. Station

**..THE PLACE..**  
**For An Ideal Lunch**  
**GREASLEY'S**  
**CAFETERIA**  
**312 CHESTNUT STREET**  
**Philadelphia**



BLACKS DEPARTMENT STORE

### NOTICE NOTICE

TOWN OF HAMMONTON,  
Report of the Sinking Fund Commission for the year 1920.

January 1st, Balance on hand	\$2,654.50
Receipts for the year:	
From Sewer Assessments	\$1,247.95
" " Sidewalk Assessments	276.58
" " Interest on Town Bonds	400.00
" " " " Notes	440.85
" " Liberty Loan Bonds	1,093.85
Town Assessments	500.00
Redemption of Town Notes	5,000.00
Sale \$900.—4th Liberty Loan Bonds	825.47
Sewer Surplus	2,000.00
Town Appropriations	4,397.51
School	668.30
	\$7,447.49
Disbursements:	
For Liberty Loan Bonds	\$11,067.90
Town Treasurer to cover School Bond, 2, 1, 30	1,000.00
Town Tax Revenue	8,000.00
Balance on hand, (cash)	483.89
	\$20,551.78

Assets of Sinking Fund Commission as of December 31st, 1920:—  
U. S. Liberty Loan Bonds \$43,900.00  
Bonds, Town of Hammonton 8,000.00  
Notes, " " 14,700.00  
Cash on Deposit 483.89  
Total Assets \$67,083.89

State of New Jersey, County of Atlantic, ss:  
I, Wm. J. Smith, President and Charles B. Miller, Secretary and Treasurer of the above named Sinking Fund Commission, being solemnly duly sworn, each for himself, says that the foregoing statement is true, to the best of his knowledge and belief.  
Witness my hand and seal, this fourteenth day of January, A. D. 1921.  
Wm. J. Smith, President.  
Charles B. Miller, Secretary & Treasurer.  
Subscribed and sworn to before me, this fourteenth day of January, A. D. 1921.  
Samuel Anderson,  
Notary Public of New Jersey.

### NOTICE TO CITIZENS

To all citizens of Hammonton and particularly to those directly interested in the Hammonton Public Schools.  
Quite frequently is heard the remark, that "If the Board of Education would not admit pupils from 'Out of Town' or other Districts, there would be no need for more school room, in the Central Section." While no concrete proposition for more school room will be submitted at the coming Annual Meeting, yet the Board of Education feels that a careful study of the following table of enrollment, and of pupils coming from 'Out of Town' or 'Other Districts,' will reveal to any fair minded person the fact that more school room is needed, not for the 'Other District' pupils, but for the pupils in our very midst.

ENROLLMENT—SCHOOL YEAR 1920-1921.

HAMMONTON CENTRAL SCHOOLS.  
HIGH SCHOOL—Grades and Divisions of Grades—KINDERGARTEN and Rooms having One Session Days.

School or Grade	No. of Pupils	Total	From Other Districts	Individual Pupils	Rooms Having One Session Days
<b>HIGH SCHOOL</b>					
Grade 12	24	24	11	1	1
Grade 11	44	44	8	1	1
Grade 10	44	44	8	1	1
Grade 9	44	44	8	1	1
Grade 8	44	44	8	1	1
Grade 7	44	44	8	1	1
Grade 6	44	44	8	1	1
Grade 5	44	44	8	1	1
Grade 4	44	44	8	1	1
Grade 3	44	44	8	1	1
Grade 2	44	44	8	1	1
Grade 1	44	44	8	1	1
<b>ROOMS</b>					
Grade 7 A	22	110	1	0	0
Grade 7 B	22	110	1	0	0
Grade 7 C	22	110	1	0	0
Grade 6 A	22	110	1	0	0
Grade 6 B	22	110	1	0	0
Grade 6 C	22	110	1	0	0
Grade 5 A	22	110	1	0	0
Grade 5 B	22	110	1	0	0
Grade 5 C	22	110	1	0	0
Grade 4 A	22	110	1	0	0
Grade 4 B	22	110	1	0	0
Grade 4 C	22	110	1	0	0
Grade 3 A	22	110	1	0	0
Grade 3 B	22	110	1	0	0
Grade 3 C	22	110	1	0	0
Grade 2 A	22	110	1	0	0
Grade 2 B	22	110	1	0	0
Grade 2 C	22	110	1	0	0
Grade 1 A	22	110	1	0	0
Grade 1 B	22	110	1	0	0
Grade 1 C	22	110	1	0	0
<b>ROOM—Kindergarten</b>					
Div. 1	29	76	0	0	0
Div. 2	27	76	0	0	0
Grand Total, Central	1276	92	6	0	0

Note—Column—From other Districts—Other Districts pay the tuition.  
Column—Individual Pupils—Pupils pay one tuition.  
SUMMARY: HIGH SCHOOL— Total within District — 122  
Total from other Districts — 61—183  
KINDERGARTEN— Total within District — 468  
Total from other Districts — 31—497  
Total within District — 2—2619  
Total from other Districts — 2—2619  
Total within District — 26  
Total from other Districts — 2—26  
Number of Primary Grades Pupils—One session days — 347  
Published by order of the Board of Education of the Town of Hammonton,  
W. R. SEELY, District Clerk

### Hammonton Gas & El. Co.

# BUICK

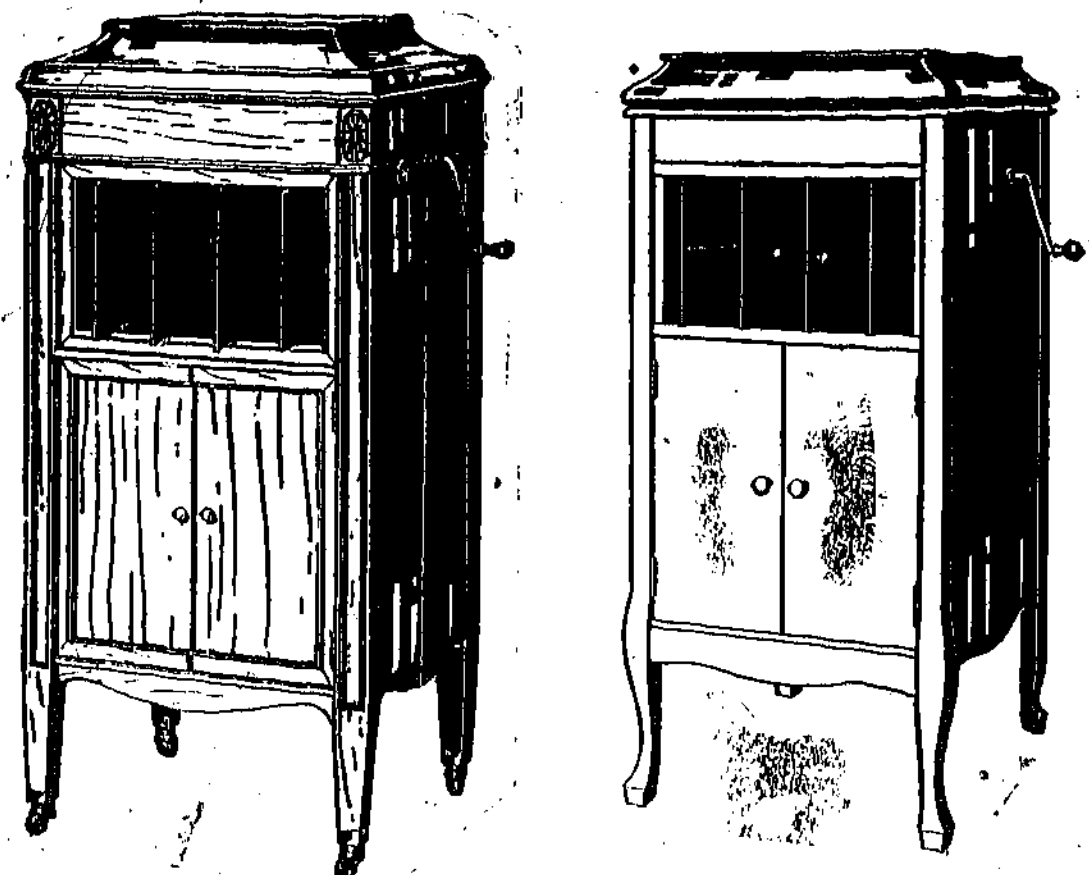


FOR the physician and other professional men whose work calls them into all weather and all sorts of going Buick is an efficient, dependable aid.

They can rely on this car for the sure, rapid transportation which their important affairs demand. The beauty and roominess of the new Buick 1921 models make them, too, pleasing at all times to the family.

Authorized Buick Service insures uninterrupted use of each Buick car. Effective January 1, regular equipment on all models will include cord tires

## HAMMONTON AUTO STATION



Sonata & Edison Machines and Records

## Jacob's Music Parlor

EXTRA EXTRA EXTRA

# BIG SALE

Of Horses, Cows, Pigs, Blankets, Shoes, Clothing, Wagons and Harness

at the Sale Stables of Mike Farkas

Egg Harbor Road, Hammonton, N. J. ON Wednesday, Feb. 9, 1921

at 12 o'clock sharp

For this sale we have a good variety of all kinds of Horses and Mules.

Several head of good family Cows: one of these cows is a great milker.

20 Head of exceptionally fine Pigs. A lot of good new and second hand Harness.

We are going to sell for the high dollar, the biggest assortment of men's and boys' Shoes that we ever offered in Hammonton. They will be slaughtered.

Also a great lot of Horse Blankets. Several good one-horse heavy farm wagons, 2 market wagons, and lots of other stuff not mentioned.

If you have anything to sell, no matter what it is, we can sell it and get you the ready cash. No charge if stuff is not sold.

Be on hand on day of sale and get bargains. You know us.

We sell for the High Dollar. Louis Traiman, Auctioneer

Sale Rain or Shine, Plenty of Shelter.

### American Committee for CHINA FAMINE FUND FROM PRESIDENT WILSON'S PROCLAMATION:

A famine, alarming in its proportions, today holds in its grip several important provinces in China. The crop failure is complete, and the present distress, which is great, is likely, before winter has run its course, to become appalling. In fact our diplomatic and consular agencies in China inform me that the loss resulting from death in distressing form may run into millions of souls. It is certain that the local government and established agencies of relief are unable to cope with the magnitude of the disaster which faces them. \* \* \* Therefore not only in the name of humanity but in that of the friendliness which we feel for a great people in distress, I venture to ask that our citizens shall, even though the task of giving is not today a light one, respond as they can to this distant but appealing cry for help.

### HEADQUARTERS: BIBLE HOUSE, NEW YORK CITY THE FAMINE IN CHINA

AREA—The five northern provinces, Chih, Shensi, Shansi, Honan and Shantung, are affected. The actual famine zone covers 100,000 square miles with a population of 46,000,000 Chinese, cause nearly one and one-half years of continuous drought, during which the normal rainfall has decreased from 35 inches a year to less than 8 inches. NUMBERS—46,000,000 Chinese are directly affected; 16,000,000 are facing immediate starvation and will die without our help; 10,000 are already dying daily.

WHAT IT MEANS TO CHINA—The famine, unless halted by American relief, means the break-up of civilization in North China; in fact the complete collapse of a vast region commercially, economically and morally, which is certain to persist for a generation to come. WHAT IT MEANS TO AMERICA—An opportunity to help a friendly nation in distress, to strengthen existing ties, to expand our trade and to have the consolation that we have saved the lives of 16,000,000 human beings who would have died without our help. THE NEED—To feed, and save lives: \$1 will save one life one day \$1 will save one life one month \$5 will save one family one month

HOW TO GIVE—If the American Committee for China Fund has no representative in your community, give your contribution to your bank, your church or send it to Vernon Monroe, Treasurer, China Famine Fund, Bible House, New York City. HOW FUNDS ARE DISTRIBUTED—All funds collected by the American Committee are transmitted to the International Famine Relief Committee at Peking. This committee acts as a clearing house for the five regional committees in the famine area; the Peking Committee (including the Red Cross), the Hankow, Tientsin, Honan, and Shantung Committees, all of which are represented on the International Famine Relief Committee, and whose members are working among the famine victims.

WHY GIVE?—China is in the grip of the worst famine in history. She turns to us as her oldest and richest friend, whom she has learned to trust. We cannot ignore her call and let these helpless people die without an effort to save them. SAVE A LIFE IN CHINA!

### Pleads for Europe's Helpless Children



"They are no more my children than yours," is Herbert Hoover's homely yet eloquent plea for 2,500,000 European children who face incredible tragedy this winter unless America comes to their rescue. The funds which American aid has been feeding millions have run out, and that the work may not stop and thus precipitate what would amount to "a massacre of the innocents" seven other great American relief organizations have united with Mr. Hoover's organization under the name of the European Relief Council in a joint appeal for funds. The collaborating agencies are the American Red Cross, the American Friends' Service Committee (Quakers), the Jewish Joint Distribution Committee, the Federal Churches of Christ in America, the Knights of Columbus, the Y. M. C. A. and the Y. W. C. A.

### LAUNCH VAST EFFORT FOR EUROPE'S YOUNG

Eight American Relief Agencies Combine to Save 2,500,000 Children Death Menace

Eight great relief organizations, working among and for every race and creed, have united under the name of the European Relief Council to coordinate child relief in Europe this winter. The Council will seek to provide funds for 2,500,000 starving and diseased children in Western and Central Europe and to administer this relief economically.

It consists of Herbert Hoover, chairman, and Franklin E. Lane, treasurer; Edgar Rickard, representing the American Relief Administration; Dr. Livingston Farrand, representing the American Red Cross; Felix Warburg, representing the Jewish Joint Distribution Committee; Wilbur K. Thomas, representing the American Friends' Service Committee (Quakers); James A. Flaherty, representing the Knights of Columbus; Dr. C. W. Hubbard, representing the Young Men's Christian Association; Miss Sarah S. Lyon, representing the Young Women's Christian Association; Dr. Arthur Brown, representing the Federal Council of Churches of Christ in America.

It is the purpose of the Council to raise \$25,000,000 in an appeal centering at the Christmas holidays, to the end that the desperate situation regarding child life may be met, in every town and community of the nation, if it planned, local committees, representing all the co-operating agencies will be formed to secure the vitally necessary funds. Of the amount sought, \$25,000,000 will be used for basic food and \$10,000,000 for medical services.

For every one of these American dollars the local governments and communities aided will furnish five dollars, in the form of transportation, labor, guards, clerical help, cash contributions and much food supplies as are locally obtainable. No children receive the free food except after medical tests showing them to be seriously undernourished. The remaining \$10,000,000 of the fund is just as urgently needed for medical service to the children.

The European Relief Council will do much more than effect economies in the raising of the child saving fund. It will, with the assisting forces of eight great agencies, keep a constant eye on the administration of America's successful aid, in order that there shall be no wastage and no tendency toward prostration.

"This is the largest co-operative benevolent organization ever attempted in the United States," Mr. Hoover says. "The organizations represented have come to the unanimous, though independently formed conclusion, that nothing but prompt and united action by the whole American people can avert inevitable tragedy for the helpless children involved. The organizations forming the Council will organize their representatives in every town and community of the nation for the raising of the necessary funds."

### Notice of Dissolution of Partnership

Notice is hereby given that on this date, the partnership between R. H. Brown and Charles B. Brown, known as R. H. Brown & Co., has been dissolved and all debts of said firm are to be paid by Charles B. Brown.

R. H. BROWN Dentist  
Office Hours, 9:30 to 12:00; 1:30 to 5:00 P. M.  
Evening by appointment.

### KELLYS - KELLYS - KELLYS

## WEEKLY SPECIALS

\$1.75 Royal Hot Water Bottle  
Special \$1.15

100 Cascara Sag. Tablets  
Special 29c.

100 Lady Webster Pills  
Special 27c.

New Jordan Almonds  
Special, pound 55c.

FRESH SHIPMENT  
CANDY KISSES  
Special, pound 43c.

Leave Your Order For  
EASTER EGGS  
15c. to \$5.00

GET THEM AT  
Kellys Central Pharmacy

## W. E. BISHOP

Sheet Metal Worker  
Tin and Slat Roofing  
Heating and Ventilation  
Copper and Skylighting Work.

121 N. Third Street  
Hammonton, N. J.

## PAUL DELZEIT

Practical Painter

219 Fairview Avenue  
Hammonton, N. J.

Yes, we do Move!

Philadelphia and Hammonton  
AUTO EXPRESS

Round trip daily. Orders receive by Keystone Phone.

317 Grape Street  
Philadelphia Office, 54 N. Front St.

Truck leaves Philadelphia office at one o'clock P. M.

Prompt Deliveries  
Trucks to Hire for Parties.

## Gardiner's Express

Trade Mark  
Piano and Organ  
Tuning and Repairing

CHAS. F. SCHNELL  
Master Playoman

1647 N. 29th St., Philadelphia, Pa.

Will be in Hammonton the first Monday of every month, or whenever you or your friends have orders at the Republican Office, at Mrs. Brown's, 200 Bellevue Ave. Look for the sign of the Hammer, as all work is guaranteed. Prices, Uprights, \$4.25; Players and Grand \$6.25.

## E. COSSABOON

Carpentering, Building and Painting

Estimation Given Fully Particular.

Box 20, R. F. D. 1  
HAMMONTON, N. J.

## SPECIAL EXCURSION TO THE

# Coal Region

Tamaqua, Mahanoy City, Gilberton, Mahanoy Plane, Shenandoah, Girardville, Ashland, FITZCARMEL and SHAMOKIN

ROUND TRIP \$4.00 War Tax 25 Cents Additional.

Leave Hammonton 11:30 A. M. Sunday night, February 12, to Philadelphia. Leave on special train leaving Reading Terminal, Philadelphia 1:00 A. M.

Return, leave on Special Train leaving Philadelphia 6:15 P. M. at Camden City P. M., Ashland 7:30 P. M., Shenandoah 8:45 P. M., Mahanoy Plane 1:15 P. M., Gilberton 1:25 P. M., Mahanoy City 2:35 P. M., Tamaqua 4:00 P. M. and arrive Reading Terminal, 1:00 P. M. Leave on regular train leaving Chestnut Street Ferry, 1:15 P. M. Sunday night. Tickets may be purchased prior to date of excursion.

SEE FLVRS  
CONSULT AGENTS  
ATLANTIC CITY RAILROAD

## Some Weekly Specials

Sunkist Oranges - - 25c doz. up.

Florida Oranges - - 35c doz. up.

Strawberry Apples, 20c % or 35c %

Thin Skin Grape Fruit, - 4 for 25c

Selected Dates, - - - 15c a lb.

Figs, - - - 15c a lb.

Sweet Apple Cider, - 15c qt.

or 45c a gal.

We also carry a full line of Fancy Fruit, Grapes, Pears, etc.

## PETER MACRI

238 Bellevue Avenue Hammonton, N. J.

## Holiday Excursion

# PHILADELPHIA

Saturday, February 12, 1921

\$1.50 Round Trip \$1.50

(War Tax 12 Cents Additional)

SPECIAL TRAIN

at one o'clock P. M.

Leaves Hammonton, 1:00 P. M. and arrives Philadelphia, 7:00 P. M.

Returning leaves Market St. Wharf, 8:30 P. M.

Similar Excursions, Sundays, February 27 and April 17

Pennsylvania System

Enjoy Your Car To the Full



The fear that financial ruin may result from injuring someone or someone's property is always hanging over the motorist who is not completely insured against every motorist risk.

Don't let fear of an accident dampen your motoring joys. Enjoy your car to the full.

## ETNA-IZE

The Etna-Auto Plan protects you against every insurable motorist danger. If you will call or phone, we will be glad to tell you more about the advantages of this combination insurance purchase.

Davenport Realty Company  
2nd Floor, Bellwood Building, Hammonton, N. J.

### One-Cent-a-Word Column

No charge less than ten cents. Each word, initial and name-words one word. Double rates charged for larger type.

### Real Estate

LOTS For Sale. Request of Mrs. A. C. Johnson, 147-150-151-152-153-154-155-156-157-158-159-160-161-162-163-164-165-166-167-168-169-170-171-172-173-174-175-176-177-178-179-180-181-182-183-184-185-186-187-188-189-190-191-192-193-194-195-196-197-198-199-200-201-202-203-204-205-206-207-208-209-210-211-212-213-214-215-216-217-218-219-220-221-222-223-224-225-226-227-228-229-230-231-232-233-234-235-236-237-238-239-240-241-242-243-244-245-246-247-248-249-250-251-252-253-254-255-256-257-258-259-260-261-262-263-264-265-266-267-268-269-270-271-272-273-274-275-276-277-278-279-280-281-282-283-284-285-286-287-288-289-290-291-292-293-294-295-296-297-298-299-300-301-302-303-304-305-306-307-308-309-310-311-312-313-314-315-316-317-318-319-320-321-322-323-324-325-326-327-328-329-330-331-332-333-334-335-336-337-338-339-340-341-342-343-344-345-346-347-348-349-350-351-352-353-354-355-356-357-358-359-360-361-362-363-364-365-366-367-368-369-370-371-372-373-374-375-376-377-378-379-380-381-382-383-384-385-386-387-388-389-390-391-392-393-394-395-396-397-398-399-400-401-402-403-404-405-406-407-408-409-410-411-412-413-414-415-416-417-418-419-420-421-422-423-424-425-426-427-428-429-430-431-432-433-434-435-436-437-438-439-440-441-442-443-444-445-446-447-448-449-450-451-452-453-454-455-456-457-458-459-460-461-462-463-464-465-466-467-468-469-470-471-472-473-474-475-476-477-478-479-480-481-482-483-484-485-486-487-488-489-490-491-492-493-494-495-496-497-498-499-500-501-502-503-504-505-506-507-508-509-510-511-512-513-514-515-516-517-518-519-520-521-522-523-524-525-526-527-528-529-530-531-532-533-534-535-536-537-538-539-540-541-542-543-544-545-546-547-548-549-550-551-552-553-554-555-556-557-558-559-560-561-562-563-564-565-566-567-568-569-570-571-572-573-574-575-576-577-578-579-580-581-582-583-584-585-586-587-588-589-590-591-592-593-594-595-596-597-598-599-600-601-602-603-604-605-606-607-608-609-610-611-612-613-614-615-616-617-618-619-620-621-622-623-624-625-626-627-628-629-630-631-632-633-634-635-636-637-638-639-640-641-642-643-644-645-646-647-648-649-650-651-652-653-654-655-656-657-658-659-660-661-662-663-664-665-666-667-668-669-670-671-672-673-674-675-676-677-678-679-680-681-682-683-684-685-686-687-688-689-690-691-692-693-694-695-696-697-698-699-700-701-702-703-704-705-706-707-708-709-710-711-712-713-714-715-716-717-718-719-720-721-722-723-724-725-726-727-728-729-730-731-732-733-734-735-736-737-738-739-740-741-742-743-744-745-746-747-748-749-750-751-752-753-754-755-756-757-758-759-760-761-762-763-764-765-766-767-768-769-770-771-772-773-774-775-776-777-778-779-780-781-782-783-784-785-786-787-788-789-790-791-792-793-794-795-796-797-798-799-800-801-802-803-804-805-806-807-808-809-810-811-812-813-814-815-816-817-818-819-820-821-822-823-824-825-826-827-828-829-830-831-832-833-834-835-836-837-838-839-840-841-842-843-844-845-846-847-848-849-850-851-852-853-854-855-856-857-858-859-860-861-862-863-864-865-866-867-868-869-870-871-872-873-874-875-876-877-878-879-880-881-882-883-884-885-886-887-888-889-890-891-892-893-894-895-896-897-898-899-900-901-902-903-904-905-906-907-908-909-910-911-912-913-914-915-916-917-918-919-920-921-922-923-924-925-926-927-928-929-930-931-932-933-934-935-936-937-938-939-940-941-942-943-944-945-946-947-948-949-950-951-952-953-954-955-956-957-958-959-960-961-962-963-964-965-966-967-968-969-970-971-972-973-974-975-976-977-978-979-980-981-982-983-984-985-986-987-988-989-990-991-992-993-994-995-996-997-998-999-1000-1001-1002-1003-1004-1005-1006-1007-1008-1009-1010-1011-1012-1013-1014-1015-1016-1017-1018-1019-1020-1021-1022-1023-1024-1025-1026-1027-1028-1029-1030-1031-1032-1033-1034-1035-1036-1037-1038-1039-1040-1041-1042-1043-1044-1045-1046-1047-1048-1049-1050-1051-1052-1053-1054-1055-1056-1057-1058-1059-1060-1061-1062-1063-1064-1065-1066-1067-1068-1069-1070-1071-1072-1073-1074-1075-1076-1077-1078-1079-1080-1081-1082-1083-1084-1085-1086-1087-1088-1089-1090-1091-1092-1093-1094-1095-1096-1097-1098-1099-1100-1101-1102-1103-1104-1105-1106-1107-1108-1109-1110-1111-1112-1113-1114-1115-1116-1117-1118-1119-1120-1121-1122-1123-1124-1125-1126-1127-1128-1129-1130-1131-1132-1133-1134-1135-1136-1137-1138-1139-1140-1141-1142-1143-1144-1145-1146-1147-1148-1149-1150-1151-1152-1153-1154-1155-1156-1157-1158-1159-1160-1161-1162-1163-1164-1165-1166-1167-1168-1169-1170-1171-1172-1173-1174-1175-1176-1177-1178-1179-1180-1181-1182-1183-1184-1185-1186-1187-1188-1189-1190-1191-1192-1193-1194-1195-1196-1197-1198-1199-1200-1201-1202-1203-1204-1205-1206-1207-1208-1209-1210-1211-1212-1213-1214-1215-1216-1217-1218-1219-1220-1221-1222-1223-1224-1225-1226-1227-1228-1229-1230-1231-1232-1233-1234-1235-1236-1237-1238-1239-1240-1241-1242-1243-1244-1245-1246-1247-1248-1249-1250-1251-1252-1253-1254-1255-1256-1257-1258-1259-1260-1261-1262-1263-1264-1265-1266-1267-1268-1269-1270-1271-1272-1273-1274-1275-1276-1277-1278-1279-1280-1281-1282-1283-1284-1285-1286-1287-1288-1289-1290-1291-1292-1293-1294-1295-1296-1297-1298-1299-1300-1301-1302-1303-1304-1305-1306-1307-1308-1309-1310-1311-1312-1313-1314-1315-1316-1317-1318-1319-1320-1321-1322-1323-1324-1325-1326-1327-1328-1329-1330-1331-1332-1333-1334-1335-1336-1337-1338-1339-1340-1341-1342-1343-1344-1345-1346-1347-1348-1349-1350-1351-1352-1353-1354-1355-1356-1357-1358-1359-1360-1361-1362-1363-1364-1365-1366-1367-1368-1369-1370-1371-1372-1



February Dates.

February and Ground Hog Day 12th, Lincoln's Birthday 14th, St. Valentine's Day 14th, Washington's Birthday.

MAKING MISTAKES.

When a plumber makes a mistake, he charges twice for it. When a lawyer makes a mistake, it is just what he wanted, because it gives him a chance to try the case all over again.

Monster Euchre and Dance IN VICTOR HALL Postponed to Wed., February 9th. Music by Egg Harbor Three. Benefit of Base Ball Club.

Musical Instruction

Advanced Piano Students Preparing for Concert Work Accepted.

Particular Attention Given to Beginners. Special Course in Technique. Private and Class Instruction. For appointments address DANIEL D. PERNA

HAMMONTON, NEW JERSEY

Oak Wood for Sale

Cut in stove length, two horse wagon load \$9.00. Dewberry sticks, 4 cents, 8 feet; grape stakes, 6 cents, 8 feet; fence posts, 25 cent, 8 feet. T. M. Wade, Box 337, Hammonton, N. J.

James J. Palmer

Real Estate & Insurance Conveyancing

Houses and Farms. Mortgages Bonds. We buy Liberty Bonds Fire Insurance. Pell Phone 6-R No. 21, Egg Harbor Blvd. opp. P. A. Depot Hammonton, N. J.

W. H. Bernshouse

Fire Insurance

Strongest Companies Lowest Rates Conveyancing, Notary Public, Commissioner of Deeds Hammonton.

Inside House Painting

Varnishing, Graining, Etc. All Work First Class.

T. H. ADAMS,

Pleasant St., Hammonton

Walter J. Vornier PLUMBING & HEATING

Contractor

Registered

Hammonton, N. J. Local Phone 904

ON THE SCREEN

Palace Theatre To-Night.

Neal Hart, "Danger Valley." Comedy, "Good Ship Rock and Rye." Doors open 4 o'clock, admission to first show, 17c. thereafter 20c.

Program for Week of February 7th.

MONDAY: Madge Kennedy, "Street Called Straight." Vanishing Dagger, Final Episode. TUESDAY: Shirley Mason, "Wing Toy." Fox News. Screen Snap Shots. WEDNESDAY: Herbert Rawlinson, "Man and His Waman." Rolin Comedy.

THURSDAY: Harry Cary, "West is West." Twelfth Episode, Bride Number Thirteen.

FRIDAY: Pearl White, "The Thief." Fox News Aud Comedy.

SATURDAY: Jack Pickford, "Double Dyed Deceiver." Harold Lloyd, "Get Out And Get Under."

Eagle Theatre To-night.

Will Rogers, "Cupid the Cowpuncher." Clyde Cook Comedy, "The Huntsman." Doors open at 7 o'clock, admission 20c.

TUESDAY FEB. 8th: Tom Mix, "The Texan." Fighting Fate, Episode No. One.

Featuring William Duncan and Edith Johnson. There are fifteen episodes in this serial, full of action and thrills. Admission, 17c.

SATURDAY: Constance Talmadge, "Virtuous Vamp." Our Usual Clever Comedy.

NOTICE

Notice is hereby given that the following local Budget and Tax Ordinance were approved by the Town Council of the Town of Hammonton, County of Atlantic, on January 26th, 1921.

A hearing on the Budget and Tax Ordinance will be held at the Council-room in Town Hall on Vine Street, in the said Town of Hammonton, on Wednesday, February 9th, 1921, at 8 o'clock, p. m. in the evening of the said day; at which time and place objections to said Budget and Tax Ordinance of the Town of Hammonton, for the year 1921, may be presented by any tax payer of said town.

LOCAL BUDGET (AND ORDINANCE)

Local Budget of the Town of Hammonton, in the County of Atlantic and State of New Jersey, for the fiscal year 1921. This Budget shall also constitute the Tax Ordinance.

An Ordinance relating to taxes for the year 1921.

Be it ordained by the Mayor and Town Council of the Town of Hammonton, County of Atlantic, that there shall be assessed, raised by taxation and collected for the year 1921, the sum of Thirty-eight Thousand Three Hundred seventy dollars and forty-six cents (\$38,370.46), for the purpose of meeting the appropriations set forth in the following statement of resources and appropriations for the fiscal year 1921.

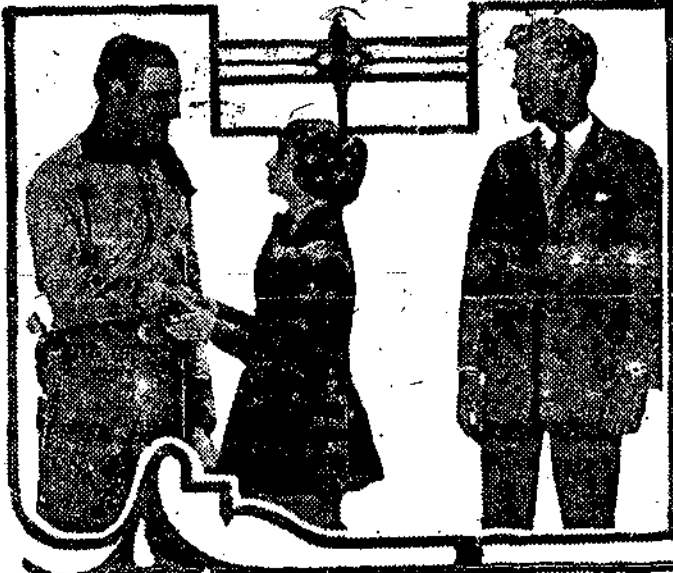
Table with columns: RESOURCES, ANTICIPATED REVENUES, 1921, 1920. Includes Surplus Revenue Appropriated, Miscellaneous Revenues, and Anticipated Revenues to be specifically applied.

Table with columns: Amount to be raised by Taxes, 1921, 1920. Includes General Government and Appropriations.

Table with columns: General Government, APPROPRIATIONS, 1921, 1920. Lists various departments like Administrative and Executive, Police Department, etc.

Table with columns: Interest on Assessments, 1921, 1920. Lists various interest-bearing items.

This Ordinance shall take effect as provided by law. Published by order of the Town Council. W. R. SEELY, Town Clerk.



"THE TEXAN" WILLIAM FOX PRODUCTION

Oak Stove Wood Sawed to length. \$6.00 load, delivered; also Lumber JOS. R. IMHOFF Local Phone 744

DEAN STANLEY RENWICK Attorney and Counsellor-at-Law After 3 p.m. every Monday at Hammonton Trust Company.

STATE OF NEW JERSEY DEPARTMENT OF STATE CERTIFICATE OF DISSOLUTION To all whom these presents may come: Greeting: Whereas, it appears to my satisfaction, by duly authenticated record of the proceedings for the voluntary dissolution thereof by the unanimous consent of all the stockholders, deposited in my office, that Black & Davenport Realty Co., a corporation of the State of New Jersey, chartered Davenport, being agent therein and in charge thereof, upon whom process may be served, has complied with the requirements of a law act concerning corporations (Revision of 1905), preliminary to the issuing of this certificate of dissolution.

\$1.50 Sunday Excursion PHILADELPHIA SUNDAYS. February 27, 1920. SPECIAL TRAIN Leaves Hammonton, N. J. 8:30 A. M. Returning leaves Philadelphia, N. J. 8:30 P. M. The right is reserved to limit the sale of tickets to the capacity of equipment available. Tickets on sale beginning Friday preceding date of excursion.

Pennsylvania System Dr. Clifford J. Waas DENTIST Office Hours: Keystone phone 1051 9 a.m. to 12 m. Copley Building, 1.30 p.m. to 5 p.m. HAMMONTON, N. J.

The Rate Increase granted to Railroad has already benefited the Railroad bond market. This is an splendid time to invest. KENNETH F. HICKS REPRESENTING Edward B. Smith & Co. BANKERS 1411 Chestnut St., Philadelphia

OTTO BETHMANN PRACTICAL Painter, Paperhanger and Decorator Latent Sample Book. Estimates Cheerfully Given. 1009 Postal Hammonton, N. J.

GEORGE T. MOTT Farm Work Yard cleaning and Grading. Eleventh St. and Penna. R. R.



Could You Replace Your Home? The house that cost \$5,000 in 1913 would cost nearly \$10,000 to replace today.

ATNA-ICE We will be glad to appraise your home and issue a policy in the Automobile Insurance Company that will cover the difference between its original cost and its present value.

Davenport Realty Co. Ballard Bldg, Hammonton

SHERIFF'S SALE By virtue of a writ of fieri facias, to me directed, issued out of the New Jersey Supreme Court, will be sold at public vendue, on THURSDAY, THE SEVENTEENTH DAY OF FEBRUARY, NINETEEN HUNDRED AND TWENTY-ONE, at two o'clock in the afternoon of said date, at the Hammonton (Overland) Garage, Egg Harbor Road and Thirteenth Street, in the Town of Hammonton, County of Atlantic and State of New Jersey.

Dr. Clifford J. Waas DENTIST Office Hours: Keystone phone 1051 9 a.m. to 12 m. Copley Building, 1.30 p.m. to 5 p.m. HAMMONTON, N. J.

The Peoples Bank Hammonton, N. J.

Capital, \$50,000 Surplus and Undivided Profits, \$100,000

Three per cent interest paid on time deposits Two per cent interest allowed on demand accounts having daily balance of \$1000 or more. State Depository. United States Depository.

Safe Deposit Boxes for Rent

M. L. Jackson, President W. J. Smith, First Vice-Pres't Samuel Anderson, Second V. P. W. R. Tilton, Cashier

DIRECTORS I. L. Jackson J. A. Waas F. Osgood George Elvins Sam'l Anderson W. R. Tilton John G. Galigue Chas. Fitting Wm. L. Black W. E. Crane William Doerfel L. M. Parkhurst

JOHN L. MYERS Carpenter and Builder JOBBING A SPECIALTY Local Phone 518 208 Fairview Ave., Hammonton

William A. Faunce, Pres't. Walter W. Clark, Vice-President. Harold W. Faunce, Sec'y. Herbert A. Faunce, Treasurer.

PHILLIPS COMPANY Fire, Tornado, Liability Compensation, Automobile And Plate Glass Insurance Guarantee Trust Building Atlantic City, N. J.

DR. J. A. WAAS DENTIST Bellevue Avenue, Hammonton

William B. Phillips Attorney and Counsellor-at-Law 12th St. between Railroads HAMMONTON, N. J.

GEO. E. STROUSE Notary Public Commissioner of Deeds Godfrey Building Hammonton

Paul A. Seely Electrical Contractor Estimates Cheerfully Given. Local Phone 784, Horton & Orchard St. Lock Box 282 Hammonton, N. J.

D. J. SAXTON Contractor Paperhanging & Painting Lock Box 63, Hammonton

N. CASHAN Notary Public. Foreign Money Orders Steam Ship Ticket Agent for and from Europe. Open evenings. Hammonton, N. J.

D. N. HURLEY Express, Hauling and Moving Local Phone 867 Second and Vine Sts. Hammonton, N. J.