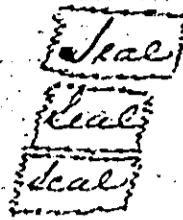
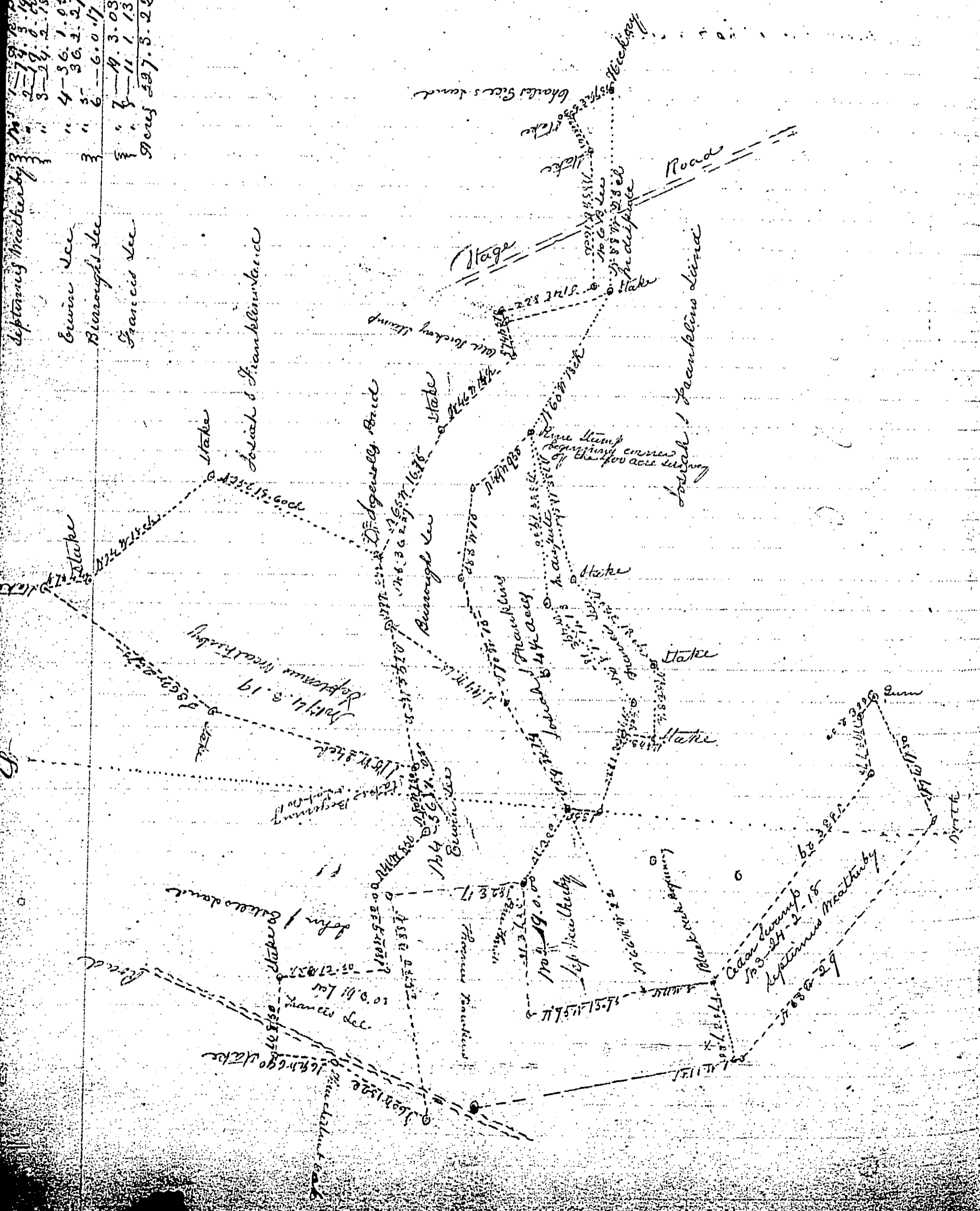


on the Map also lot No 5 which is also in dispute as regards its title and is also marked and numbered on this Map
 Given under our hands and seals this fifth day of March in the year of our Lord one thousand eight hundred and forty nine

John G. Abbott
 Nathaniel his Steelman
 Solomon his Warner
 mark



Deputy's Mark by 3
 1-19-49
 2-19-49
 3-19-49
 4-30-49
 5-30-49
 6-30-49
 7-30-49
 8-30-49
 9-30-49
 10-30-49



- 1 The share by us numbered one is bounded as follows beginning at a Pine Knot for a corner which is also a corner to land of John J. Ester and runs (1) South 13 West 24 chains to a stake then (2) South 26 West 23.75 chains to a stake then (3) North 7 West 4.41 chains to a stake then (4) North 42 West 18 chains to a stake then (5) North 23 East 18 chains and a 60 links to an old pine stump near the Byrdell pond then (6) North 79 East 24 1/2 chains to the beginning within which boundaries is contained
- 2 twenty four acres three rods and sixteen perches neat measure. Lot number two is bounded as follows: Beginning at a pine knot corner to lands of Thomas Hawkins and runs from thence along his line North 87 East 18 chains to a stake then (2) North 13 West 13 chains and seventy five links to a stake then (3) South 66 1/2 West 22 chains to a stake it being a corner of the 34 1/2 acre survey then (4) South 60 East 10 chains to the place of Beginning within which boundaries is contained nineteen acres
- 3 strict measure lot number three is bounded as follows Beginning at a Black Oak standing on the south side of a branch of Edison's creek and runs from thence (1) North 73 East 9 chains and twenty five links to a stake then (2) North 11 West 1 chain then (3) North 53 West 29 chains to a stake then (4) South 79 West 17 chains and fifty links to a Gum Tree marked as an old corner then (5) South 55 East 2.50 chains then (6) North 79 East 7.75 chains to a stake then (7) South 53 East 29 chains to the beginning containing twenty four acres two rods and
- 4 eighteen perches neat measure. Lot number four is bounded as follows beginning at a pine knot corner of lot No 2 and runs thence (1) North 60 West 16 chains to a corner of the 34 1/2 acre survey then (2) along the line of said survey South 89 West 14 chains then (3) South 34 West 15 chains to stake standing in the line of lot No 1 then (4) North 79 East 13.75 chains to the beginning containing lot No 1 then (5) North 80 East 7 chains of fifty links then (6) South 26 East 8.50 chains then (7) South 80 East 15.0 chains then (8) North 8 West 17 chains to the beginning containing thirty six acres one Rod and five perches neat measure. Lot number five begins at a pine stump it being the beginning corner to the 400 acre survey and runs along the line of said survey (1) North 60 West 18 chains (2) South 20 East 12 1/2 chains then (3) North 74 East 4 chains then (4) South 40 East 14 1/2 chains then (5) South 65 East 16 1/4 chains to a pine stump near to the Byrdell Pond it being a corner to lot No 4 then (6) North 79 East 8.75 chains to stake it being a corner to lot No 4 then along the line of lot No 4 North 34 East 15 chains to a corner of the 34 1/2 acre survey then adjoining the same (8) South 70 West 15 chains to a stake then (9) North 83 West 10 chains then still binding said survey (10) North 49 West 9 1/2 chains to the beginning containing thirty six acres two Rods and twenty seven perches
- 6 Lot number six begins at the North West or second corner of lot No 5 and runs thence (1) North 88 West 23 chains to a small Hickory then (2) North 57 1/2 East 5.30 chains to a stake then (3) North 60 East 4.80 chains then (4) North 88 1/2 East 16 chains to a stake then (5) South 14 East 11 1/2 chains to a stake then (6) North 74 East 11.0 chain to a stake then (8) North 20 West 12 1/2 chains do beginning containing six acres and seventeen perches neat measure. Lot number seven begins at a small Black Oak it being the North West corner of lands belonging to Thomas Hawkins and runs along his line South 38 East 25 1/2 chains to a stake standing in the said Hawkins line then (2) North 60 West 13.22 chains to three chestnuts for a corner standing by the Public Road then (3) South 6 1/2 West 6.90 chains to a stake then (4) West 8.50 chains to a stake crossing the said Public Road then (5) North 8 West 12 1/2 chains to a stake then (6) North 80 West 8 chains to a stake it being a corner of lot No 4 then (7) along the line of No 4 to the beginning containing nineteen acres one Rod and thirteen perches. Lot number eight begins at the Pine Stump it being the beginning corner of lot No 5 also beginning corner to the 400 acre survey and runs from thence (1) North 73 East 18 chains to a stake then (2) North 54 East 13 chains to a stake then (3) North 80 East 8 1/2 chains to a stake then (4) North 70 West 8 1/2 chains to the line of the 34 1/2 acre survey then (5) North 72 1/2 West 9.60 chains to a corner of said survey then (6) still binding the said survey North 49 West 18 chains to a stake then (7) still binding said survey South 83 West 19 1/2 chains to the beginning containing eleven acres and two rods and sixteen perches neat measure.