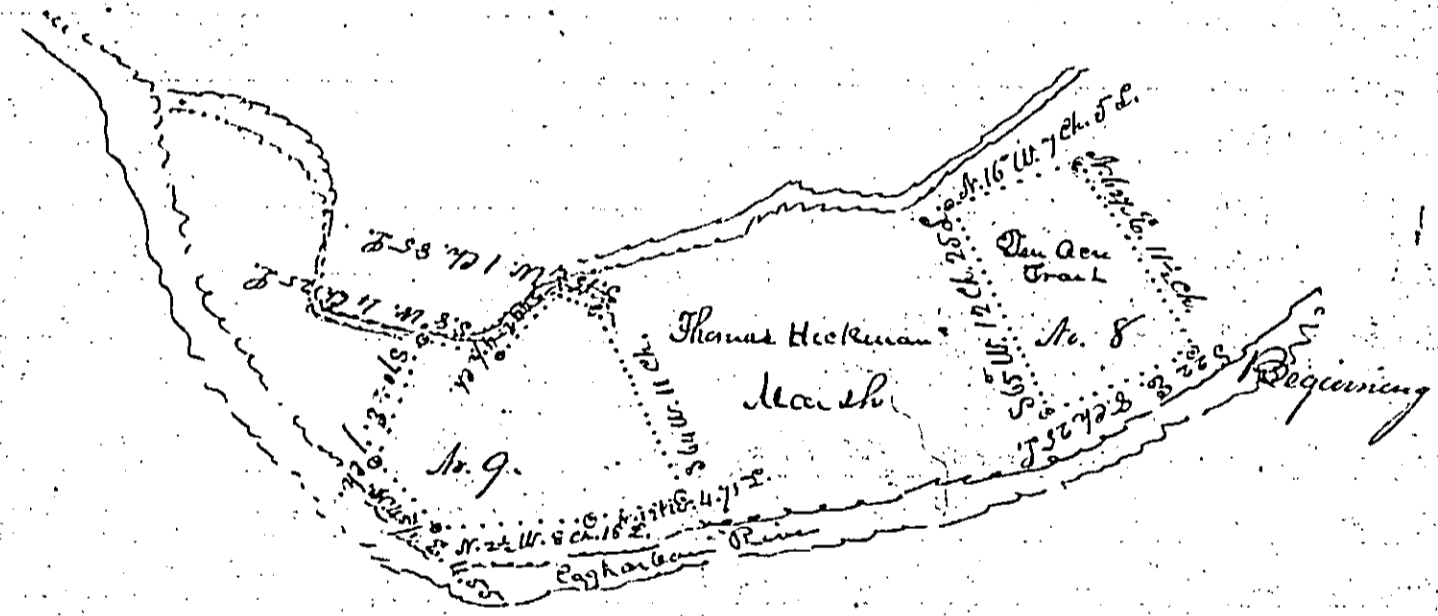


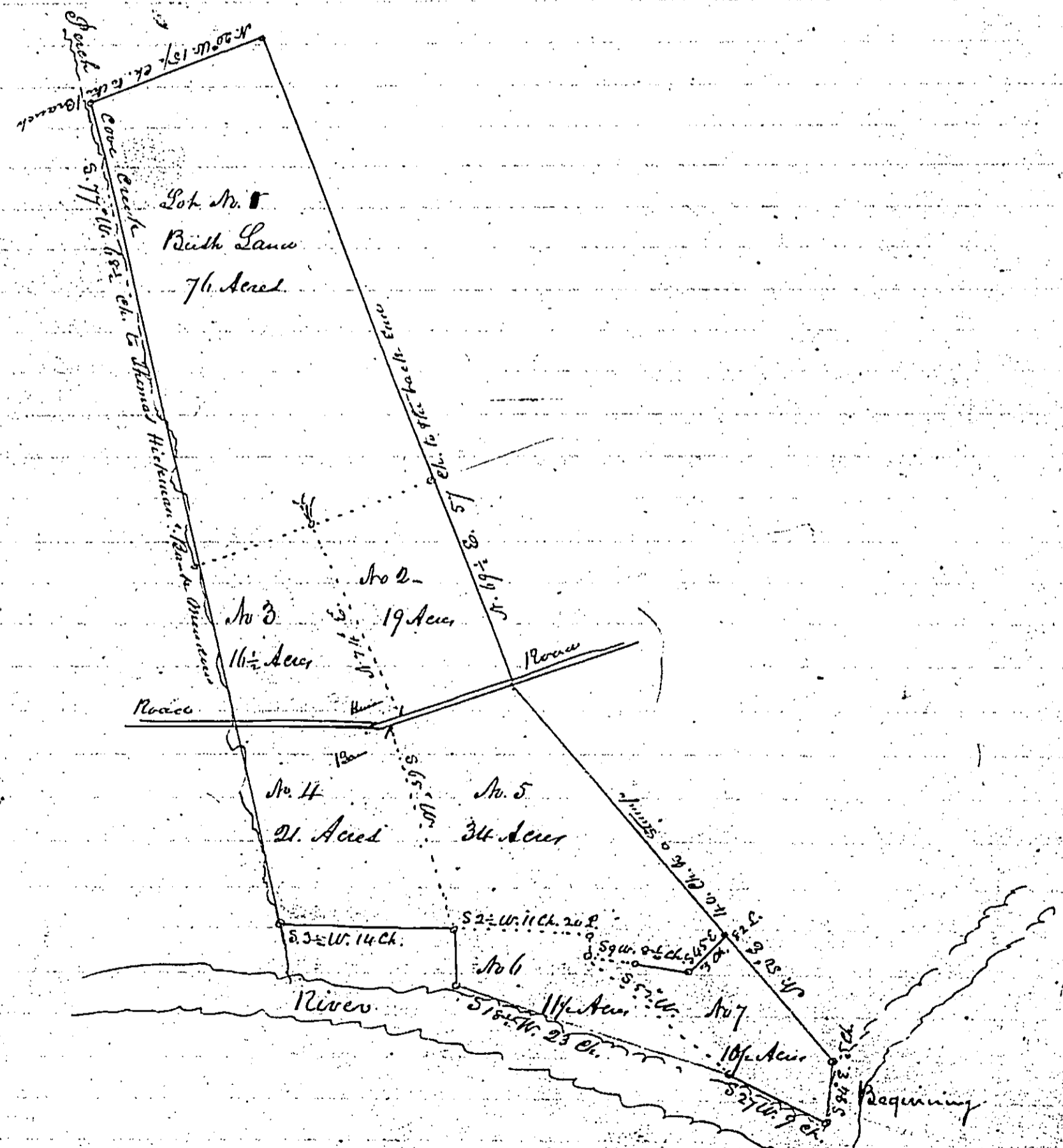
Settled by Thomas Hickman, sent by deed bearing date the twentieth day of September 1826

We now give the course and distance and admeasurement of another tract of Marsh on the same River and in the same Township as the tract above and purchased from and by the same as the other by deed dated the thirtieth day of March 1826 Beginning at a stake by the side of the river, which stake is a corner to the Marsh of Thomas Hickman & runs first South sixty four degrees West eleven chains in Thomas Hickman's line to Middle Creek thence binding the Creek (2) South fifteen and a half degrees West one chain and eighty-five links (3) South forty-four degrees East four chains and fifty links (4) South eighty degrees West four chains and twenty-five links (5) leaving the Creek South seventy and a half degrees East seven chains to the river thence (6) North forty-five and a half degrees East four chains and fifty-five links to the bend of the river (7) North two and a half degrees West eight chains and eighteen links thence (8) North twelve degrees West four chains and seventy-five links to the place of beginning, containing twelve and a half acres more or less. We lay down the drafts of the two lots in Weymouth Township which we number 8 & 9 and set them off from Thomas Hickman and James Hickman which was purchased all in one deed, the two lots which is added is the lot set off to Brock Hickman



We now give the boundary of the Homestead property of George A. Hickman deceased, as follows Beginning at a stake in the mouth of a ditch at the river, which ditch is a line between the said George and Samuel Hickman and runs (1) North fifty degrees East forty chains to a black oak stump by the side of the main road (2) North sixty-nine and a half degrees East fifty seven chains back to the Widow Beadons line thence (3) North twenty degrees West fifteen chains and fifty links binding the back line of the old survey to the water course of Perch Cove Creek (4) down the said water course the several courses thereof but the general course is about South seventy-seven degrees West, sixty eight chains to a line ditch of Thomas Hickman & thence (5) binding said ditch South Three and a half degrees West fourteen chains to the old bank thence (6) South eighty-seven degrees and a half West four chains and fifty links on the bank to the river (7) binding the river South eighteen degrees and a half West twenty-five chains (8) South twenty seven degrees West nine chains to the old bank thence (9) South eight degrees West four chains

and a half East five chains back to the mouth of the ditch and place of beginning, containing one hundred and eighty seven acres be the same more or less. We now give the division line through the place in the West side of the main River road beginning at a stake by the side of the road near the barn in Run (1) South sixty five degrees West eighteen chains to a ditch a little way on the mouth and at the south end of a bridge over said ditch which ditch divides the pasture from the mowing meadow (2) binding said ditch South Two and a half degrees West eleven chains and twenty links thence (3) North eighty five degrees West one chain and fifty links thence (4) South Nine degrees West four chains and thirteen links thence (5) South fifty-two degrees West across the mowing meadow to a stake by the edge of the river, and then sets the line, we now give the line on the East side of the road, beginning at a stake by the edge of said road and runs (1) North seventy four East seventeen chains and twenty five links or to the line that runs across which divided lot No 1 from lots 2 & 3 thence end this line, we now lay down the draft with the lines dotted off as is heretofore specified



No 2 & 3 is a part cleared and the residue Bush No 4 & 5 is cleared land and Swamp and meadow No 6 & 7 is mowing meadow