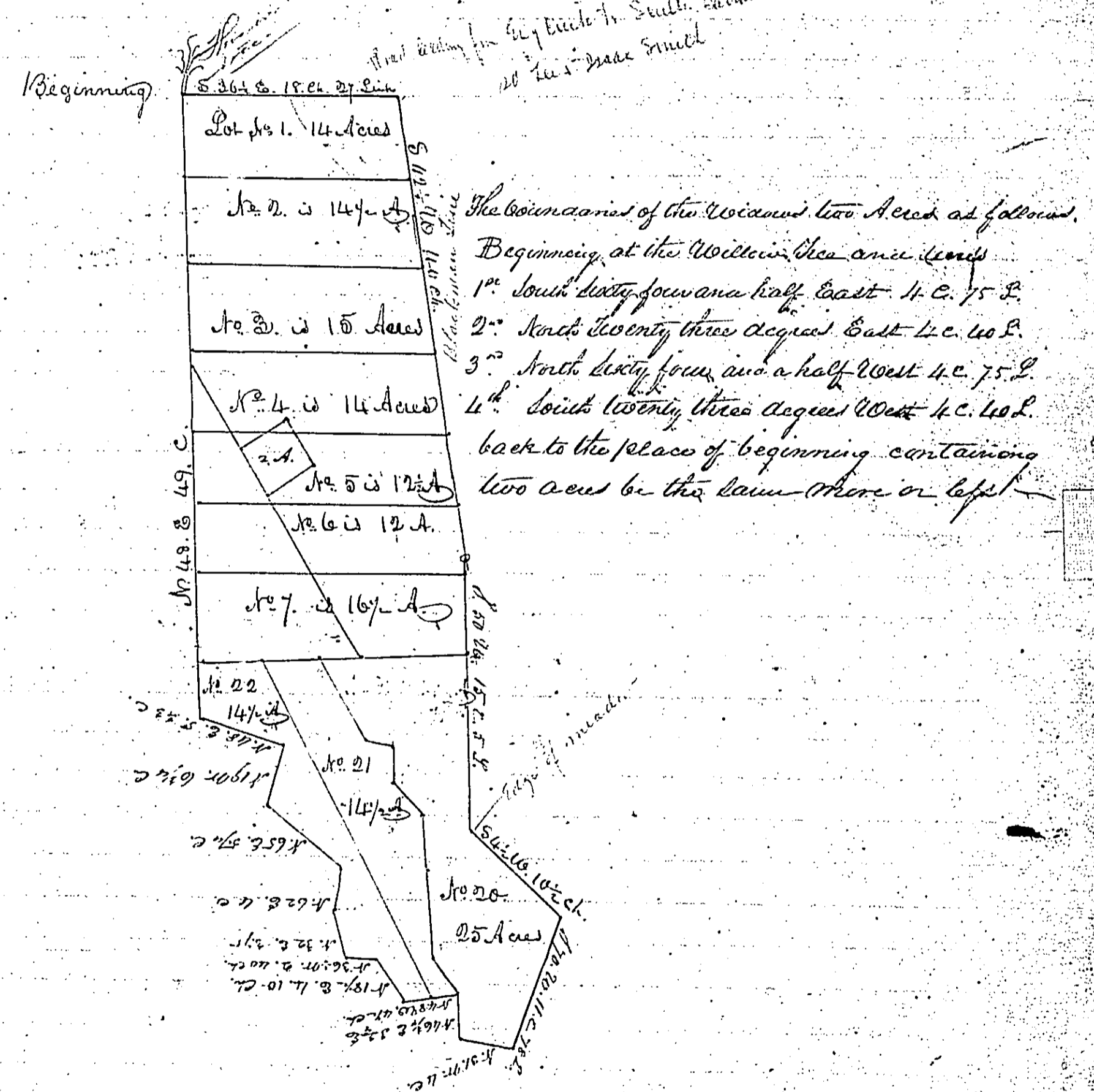


25  
 homestead survey before mentioned, beginning at a stake by the side of a  
 ditch in the blackman lane and runs 12/ South four and a half degrees West  
 ten and a half chains 11/ South fifty degrees West fifteen and a quarter chain 13/  
 South twenty degrees West eleven chains and seventy eight links 14/ North thirty  
 one West four chains 15/ forty six and three quarters East three chains and seven  
 four links 16/ North forty nine degrees West four and a half chains 17/ North  
 eighteen and a half degrees East four chains and ten links 18/ North thirty six  
 and a half West two chains and forty links 19/ North thirty two east three  
 and three quarters chains 110/ North sixty two degrees east four chains 111/  
 North one degree East eight chains and fourteen links 112/ North sixty four  
 East five and one quarter chains 113/ North nineteen degrees West nine  
 and three quarters chains 114/ North forty eight east five chains and thirty three  
 links and four the upland survey consisting fifty nine acres be it more  
 less - We now give the bounds of a moor tract of Marsh on the creek  
 opposite the one just mentioned: Beginning at the mouth of a small ditch  
 out of said creek runs 11/ South eighty eight degrees East along said ditch thirteen  
 chains and twenty links 12/ North twenty degrees East seven chains 13/ North seventy six  
 and a half degrees West four and one quarter chains 14/ North thirty degrees two and  
 a half chains 15/ North eighty West six chains 16/ North thirty two East ten chains and  
 twenty five links 17/ North sixty seven degrees West four and a quarter chains 18/ North  
 twelve degrees West two and a half chains 19/ South twenty two West nine chains  
 110/ North thirty three degrees West three chains 111/ South forty one degrees East five  
 and a half chains 112/ North fifty three East three and a quarter chains 112/ South  
 ten degrees East four chains 114/ West four chains 115/ South sixteen degrees East  
 eleven chains and a quarter chains back to the place of beginning containing  
 twenty two acres be the same more or less - We now give the boundary of  
 a survey called the Hopkin survey situate in the township of Weymouth and  
 lay on the south west side of Egg Harbour River containing half Marsh and fishery  
 beginning at a stake standing by the edge of a creek called Hanns Creek in the same  
 parish, thence runs 11/ North fifty eight degrees East five chains 12/ South sixty  
 two degrees one chain to a line 13/ North thirty three degrees East sixteen chains  
 14/ North seventy six and a half West four and a quarter chains 15/ North  
 thirty seven and a half degrees West nine chains and sixty three links  
 16/ North sixty five degrees West twenty four and a half chains 17/ North  
 forty two degrees West fourteen chains 18/ North thirty seven West six chains  
 19/ North sixty West four chains and ninety links 110/ South fifty seven degrees West  
 seven chains and forty links 111/ South thirty five degrees East sixty four and a  
 half chains unto the place of beginning containing thirty two acres be the  
 same more or less - We now proceeds to give the boundary of a survey and  
 called the Adams ground survey and formerly owned by constant Smith and  
 Samuel Lee late deceased, situate on the south westerly side of Egg Harbour  
 River in the township of Weymouth and partly adjoins the other survey  
 last mentioned and contains Marsh and fishery at the other -  
 Beginning at a stake standing at the mouth of Hanns creek and runs as  
 follows 11/ North fifty four degrees West one chain 12/ South fifty seven degrees  
 West ten chains and seventy links 13/ North forty five and a half degrees  
 West ten chains 14/ South sixty five degrees West four chains and twenty five links 15/  
 South sixty six and a half degrees East thirteen chains and forty links 16/ South  
 twenty degrees West fifteen chains and a half 17/ South eighty two and a half  
 degrees East eight chains and nine links 18/ South eleven degrees East  
 one chain and a link 19/ North fifty seven degrees East seven chains

to the place 110/ North thirty four and a half degrees West seven chains 111/ North twenty  
 one degrees West thirteen chains and eighty links 112/ North three and a quarter  
 degrees East sixteen chains and sixty links back to the place of beginning  
 containing forty four acres in the whole survey be the same more or less -  
 constant Smith and the heirs of said Lee, having made a division of the last  
 mentioned survey, the one half belong to the said heirs, it was afterwards  
 numbered and set off unto Samuel Albertson one of said heirs at his propor-  
 tionable part of Marsh, Exclusive of the fishery - We will now proceed  
 to plot all the above mentioned surveys and lay them off in lots, and number  
 and name each man's share - We now lay down the draft of the Homestead  
 survey and likewise the draft of two acres with the dwelling house and barn  
 on that which was set off to the said heirs or certain part of said buildings  
 which will be named hereafter



The several courses of the Division line are as follows, from the fork of the creek up  
 11/ N. 15 1/2 E. Thru and a half 12/ N. 46 1/2 E. 12 b. 25 L. 13/ N. 9 E. 3 1/2 C. 14/ N. 50 E.  
 3 C. 10 L. 15/ N. 23 1/2 W. 2 h. 23 L. 16/ N. 15 E. until it strikes the upland survey